

User Guide

Vented Dataloggers

August 10, 2023

[More Info](#) | [Instructions](#) | [Get Quote](#)



 [Get Quote](#)

Solinst[®]

© 2023 Solinst Canada Ltd. All rights reserved. Printed in Canada.

Solinst and Levellogger are registered trademarks of Solinst Canada Ltd.

All other trademarks and registered trademarks are the property of their respective owners.

1 Introduction	5
1.1 Vented Water Level Dataloggers	5
1.1.1 LevelVent 5	6
1.1.2 AquaVent 5	7
1.1.3 LevelVent	8
1.1.4 AquaVent	9
1.2 Measurement Parameters	10
1.2.1 Level	10
1.2.1.1 Pressure Calibration	10
1.2.2 Temperature	10
1.3 LevelVent System Components	11
1.3.1 LevelVent Communication Wellhead	11
1.4 AquaVent System Components	13
1.4.1 AquaVent Wellhead and Connector Cables	13
1.4.1.1 SPX Wellhead LED Status	14
1.5 Vented Cable	15
1.5.1 Vented Cable Connections	15
1.5.1.1 Connecting to the LevelVent Wellhead	15
1.5.1.2 Connecting to the AquaVent Wellhead	17
1.5.1.3 Connecting to the Logger	19
1.5.2 Vented Cable Precautions	19
2. Solinst Levellogger Software	20
2.1 System Requirements	20
2.2 Software Installation	21
2.3 Software Communication	22
3 Software Startup, Configurations and Settings	23
3.1 Startup	23
3.1.1 Software/Firmware Update Checks	23
3.2 Configuration and Settings	23
3.2.1 Data Directory	23
3.2.2 File Name Settings	24
3.2.3 Default File Type	24
4 Datalogger Programming	25
4.1 Datalogger Settings	26
4.1.1 Setting Up Channel Information	26
4.1.1.1 Level Channel (Ch1)	26
4.1.1.2 Temperature Channel (Ch2)	26
4.2 Datalogger Information	27
4.3 Datalogger Memory	27
4.4 Datalogger Time	27
4.5 Datalogger Sampling Mode	28
4.6 Datalogger Memory Mode	29
4.7 Saving and Retrieving Datalogger Settings Files	30
4.8 Datalogger Zero	30
4.9 Starting and Stopping the Datalogger	31
5 Data Control	33
5.1 Downloading Options and Saving Data Files	33
5.1.1 Default File Format	33
5.1.2 Downloading Data	34
5.1.3 Saving Data	35

5.2	Graph Manipulation and Zoom Function	36
5.3	File Export and Print Function	38
6	Data Compensation	39
6.1	Data Wizard	39
7	Real Time View	47
8	Vented Datalogger Installation	48
8.1	Installing the LevelVent	48
8.1.1	Installing LevelVent in 2" Well	48
8.2	Installing the AquaVent	51
8.2.1	Installing AquaVent Wellhead Batteries	51
8.2.1.1	Wellhead Battery Life Estimates	51
8.2.2	Installing AquaVent in 2" Well	52
8.3	Logger Orientation	56
8.4	Logger Installation Depth	56
8.5	Installation Precautions	56
8.6	Installation in Extreme Environments	57
8.6.1	Freezing or High Temperature Conditions	57
8.6.2	Marine or Brackish Installations	57
8.6.3	Biofouling Conditions	58
9	Vented Datalogger Maintenance	59
9.1	Logger Maintenance	59
9.2	Vented Cable Maintenance	60
9.2.1	Vented Cable Blowout Fitting	61
9.3	Wellhead Maintenance	62
10	Diagnostics Utility	63
10.1	Run Diagnostics	63
10.2	Read Memory Dump	64
10.2.1	File Conversion (hex to xle)	64
10.3	Create Report	65
10.4	Email Report	65
10.5	Software/Firmware Updates	65
10.6	Reset AquaVent Battery Indicator	66
10.7	Clear Datalogger Zero	66
11	Firmware Upgrade Utility	67
12	Troubleshooting	68
12.1	Problems During Installation of Levellogger Software	68
12.2	Error During Software Uninstall Process	68
12.3	Data Has Been Erased Accidentally	68
12.4	Error Messages During Use of Software	68

1 Introduction

This user guide explains the capability, operation, and maintenance of the LevelVent 5, AquaVent 5, and the previous LevelVent and AquaVent water level and temperature dataloggers. Focus is on use with Solinst Levellogger Software (Solinst Protocol), with separate AquaVent User Guides discussing use with SDI-12 and MODBUS protocols.

To begin using your datalogger, install Levellogger Software Version 4.6.3 (or higher).

Please visit: <https://downloads.solinst.com/> to download the current version or check for updates.

1.1 Vented Water Level Dataloggers

The LevelVent and AquaVent are accurate water level and temperature dataloggers. They use a gauged (vented) pressure transducer. The pressure sensor is open to the atmosphere via a vented cable to surface, therefore, provides water level measurements that are automatically compensated for barometric effects, as well as temperature.

The loggers contain a desiccant and hydrophobic filter where the Vented Cable connects. There is no need to replace the desiccant or filter, they are designed to provide protection from moisture over the lifetime of the instrument, while still allowing air to vent to the transducer.

LevelVent 5 and AquaVent 5 loggers have a baked-on coating using polymerization technology for extra corrosion resistance in harsh environments. They use the same Wellheads, Communication Cables, and Vented Cables as the previous LevelVent and AquaVent loggers.

1.1.1 LevelVent 5

Note: To use the LevelVent 5 with Version 4.6.3 Levellogger Software, the LevelVent 5 logger must be using Firmware Version 1.006 or higher.



Figure 1-1 LevelVent 5 Logger

[More Info](#) | [Instructions](#) | [Get Quote](#)

Table 1–1: LevelVent 5 Logger Technical Specifications

Level Sensor:	Piezoresistive Silicon with Hastelloy Sensor
Ranges:	5, 10, 20 m
Accuracy	± 0.05% FS
Normalization:	Automatic Temperature Compensation
Temp. Comp. Range:	0°C to 50°C
Temperature Sensor:	Platinum Resistance Temperature Detector (RTD)
Temp. Sensor Accuracy:	± 0.05°C
Temp. Sensor Resolution:	0.003°C
General:	
Battery Life Estimate:	10 Years based on 1 reading/minute (in logger, not user replaceable)
Clock Accuracy (typical):	± 1 minute/year (-20°C to 80°C)
Operating Temperature:	-20°C to 80°C
Maximum # Readings:	150,000 sets of readings
Memory:	Continuous or Slate mode
Communication Speed:	9600 bps Solinst USB
Size:	22 mm x 173 mm (7/8" x 6.8")
Weight:	190 grams (6.7 oz.)
Wetted Materials:	Delrin®, Viton®, Polyurethane (TPU boot), 316L Stainless Steel, Hastelloy, PFAS-free PTFE
Corrosion Resistance:	Baked-on coating using polymerization technology (inside and out) and Hastelloy pressure sensor
Sampling Modes (using Levellogger Software):	Linear, Event & User-Selectable Schedule with Repeat Mode, Future Start, Future Stop, Real Time View
Measurement Rates:	0.125 second to 99 hours
Barometric Compensation:	Automatic

LevelVent 5 Models	Full Scale	Accuracy	Resolution
M5	5 m (16.4 ft.)	± 0.3 cm (0.010 ft.)	0.001% FS
M10	10 m (32.8 ft.)	± 0.5 cm (0.016 ft.)	0.0006% FS
M20	20 m (65.6 ft.)	± 1 cm (0.032 ft.)	0.0006% FS

Note: The Model number refers to the depth of submergence below water level that the pressure sensor can withstand. i.e.: The LevelVent 5 which is available in M5, M10, and M20 ranges has actual water level ranges of 5 m(16.40 ft), 10 m

1.1.2 AquaVent 5

Note: To use the AquaVent 5 with Version 4.6.3 Levellogger Software, the AquaVent 5 logger must be using Firmware Version 1.006 or higher. The Wellhead must use Firmware Version 1.000 or higher.



Figure 1-2 AquaVent 5 Logger

[More Info](#) | [Instructions](#) | [Get Quote](#)

Table 1–2: AquaVent 5 Logger Technical Specifications

Level Sensor:	Piezoresistive Silicon with Hastelloy Sensor
Ranges:	5, 10, 20 m
Accuracy	± 0.05% FS
Normalization:	Automatic Temperature Compensation
Temp. Comp. Range:	0°C to 50°C
Temperature Sensor:	Platinum Resistance Temperature Detector (RTD)
Temp. Sensor Accuracy:	± 0.05°C
Temp. Sensor Resolution:	0.003°C
General:	
Battery Life Estimate:	8 Years - based on 1 reading/minute (user replaceable in Wellhead)
Clock Accuracy (typical):	± 1 minute/year (-20°C to 80°C)
Operating Temperature:	-20°C to 80°C
Maximum # Readings:	150,000 sets of readings
Memory:	Continuous or Slate mode
Communication Speed:	57,600 bps Solinst USB, 1200 baud SDI-12, MODBUS RS-232/RS-485 (various speeds)
Size:	22 mm x 173 mm (7/8" x 6.8")
Weight:	190 grams (6.7 oz.)
Wetted Materials:	Delrin®, Viton®, Polyurethane (TPU boot), 316L Stainless Steel, Hastelloy, PFAS-free PTFE
Corrosion Resistance:	Baked-on coating using polymerization technology (inside and out) and Hastelloy pressure sensor
Sampling Modes (using Levellogger Software):	Linear, Event & User-Selectable Schedule with Repeat Mode, Future Start, Future Stop, Real Time View
Measurement Rates:	0.125 second to 99 hours
Barometric Compensation:	Automatic

AquaVent 5 Models	Full Scale	Accuracy	Resolution
M5	5 m (16.4 ft.)	± 0.3 cm (0.010 ft.)	0.001% FS
M10	10 m (32.8 ft.)	± 0.5 cm (0.016 ft.)	0.0006% FS
M20	20 m (65.6 ft.)	± 1 cm (0.032 ft.)	0.0006% FS

1.1.3 LevelVent

Note: To use the LevelVent with Version 4.6.3 Levellogger Software, the LevelVent logger must be using Firmware Version 1.000 or higher.



Figure 1-3 LevelVent Logger

Table 1–3: LevelVent Logger Technical Specifications	
Level Sensor:	Piezoresistive Silicon with Hastelloy Sensor
Ranges:	5, 10, 20 m (15, 30, 65 ft.)
Accuracy	± 0.05% FS
Normalization:	Automatic Temperature Compensation
Temp. Comp. Range:	0°C to 50°C
Temperature Sensor:	Platinum Resistance Temperature Detector (RTD)
Temp. Sensor Accuracy:	± 0.05°C
Temp. Sensor Resolution:	0.003°C
General:	
Battery Life Estimate:	10 Years based on 1 reading/minute (in logger, not user replaceable)
Clock Accuracy (typical):	± 1 minute/year (-20°C to 80°C)
Operating Temperature:	-20°C to 80°C
Maximum # Readings:	40,000
Memory:	Continuous or Slate mode
Communication Speed:	9600 bps Solinst USB
Size:	22 mm x 178 mm (7/8" x 7")
Weight:	129 grams (4.5 oz.)
Wetted Materials:	Delrin, Viton, 316L Stainless Steel, Hastelloy
Sampling Modes (using Levellogger Software):	Linear, Event & User-Selectable Schedule with Repeat Mode, Future Start, Future Stop, Real Time View
Measurement Rates:	0.125 second to 99 hours
Barometric Compensation:	Automatic

LevelVent Models	Full Scale	Accuracy	Resolution
M5	5 m (16.4 ft.)	± 0.3 cm (0.010 ft.)	0.001% FS
M10	10 m (32.8 ft.)	± 0.5 cm (0.016 ft.)	0.0006% FS
M20	20 m (65.6 ft.)	± 1 cm (0.032 ft.)	0.0006% FS

1.1.4 AquaVent

Note: To use the AquaVent with Version 4.6.3 Levellogger Software, the AquaVent logger must be using Firmware Version 1.000 or higher. The Wellhead must use Firmware Version 1.000 or higher.



Figure 1-4 AquaVent Logger

Table 1–4: AquaVent Logger Technical Specifications	
Level Sensor:	Piezoresistive Silicon with Hastelloy Sensor
Ranges:	5, 10, 20 m (15, 30, 65 ft.)
Accuracy	± 0.05% FS
Normalization:	Automatic Temperature Compensation
Temp. Comp. Range:	0°C to 50°C
Temperature Sensor:	Platinum Resistance Temperature Detector (RTD)
Temp. Sensor Accuracy:	± 0.05°C
Temp. Sensor Resolution:	0.003°C
General:	
Battery Life Estimate:	8 Years - based on 1 reading/minute (user replaceable in Wellhead)
Clock Accuracy (typical):	± 1 minute/year (-20°C to 80°C)
Operating Temperature:	-20°C to 80°C
Maximum # Readings:	40,000
Memory:	Continuous or Slate mode
Communication Speed:	9600 bps Solinst USB, 1200 baud SDI-12, MODBUS RS-232/RS-485 (various speeds), data download speed: 57,600 bps
Size:	22 mm x 178 mm (7/8" x 7")
Weight:	129 grams (4.5 oz.)
Wetted Materials:	Delrin, Viton, 316L Stainless Steel
Sampling Modes (using Levellogger Software):	Linear, Event & User-Selectable Schedule with Repeat Mode, Future Start, Future Stop, Real Time View
Measurement Rates:	0.125 second to 99 hours
Barometric Compensation:	Automatic

AquaVent Models	Full Scale	Accuracy	Resolution
M5	5 m (16.4 ft.)	± 0.3 cm (0.010 ft.)	0.001% FS
M10	10 m (32.8 ft.)	± 0.5 cm (0.016 ft.)	0.0006% FS
M20	20 m (65.6 ft.)	± 1 cm (0.032 ft.)	0.0006% FS

1.2 Measurement Parameters

1.2.1 Level

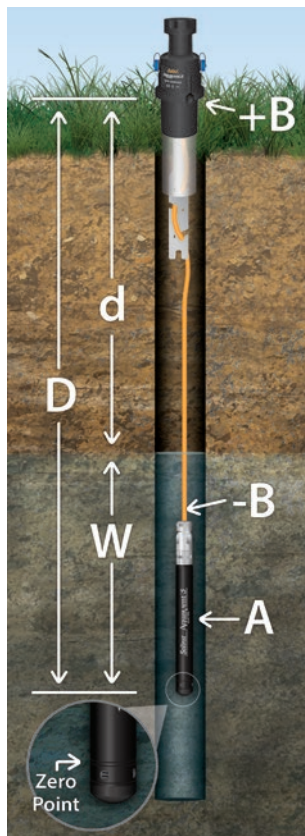
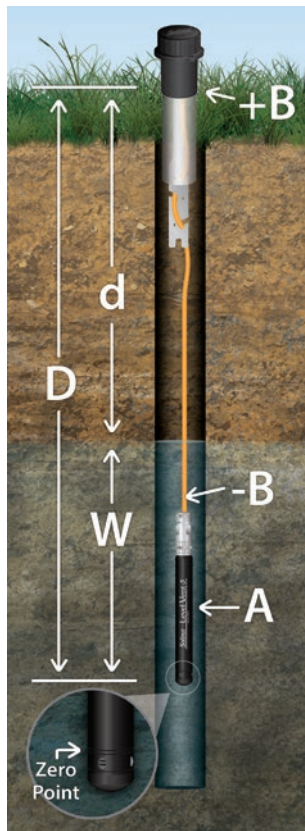
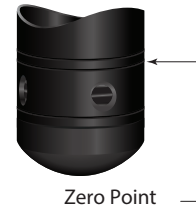
LevelVent and AquaVent transducers detect both water (**W**) and barometric pressure (**+B**). **However**, a vent tube to surface allows barometric effects on the pressure sensor to be eliminated (**-B**). Therefore, the LevelVent and AquaVent provide readings of the actual pressure of just water above the pressure sensor zero point (**A**). This equation represents how the pressure sensors work:

$$A = (W + +B) + (-B)$$

Therefore, $A=W$ (See Figure 1-5).

- A** = LevelVent/AquaVent readings
- W** = Water column height
- +B** = Barometric pressure detected by the pressor sensor
- B** = Barometric pressure applied through the vented cable

$$A = D \text{ (depth of AquaVent Zero Point)} - d \text{ (depth to water measurement)}$$



1.2.1.1 Pressure Calibration

The LevelVent and AquaVent are calibrated against a range of set reference points to an accuracy of 3 decimal places. During the calibration procedure, the logger is fully submerged in a highly accurate water bath until conditions are stable. The pressure is then calibrated to six separate pressure points covering the entire range of pressure for that particular logger to check for any non-linearity. The process is repeated again at two different temperatures to check for temperature effects. Once done, the logger is approved after all specifications for accuracy, precision, stability and hysteresis have been met. The logger should be calibrated for the life-time of the instrument, as long as it is used within its given technical specifications, in compatible monitoring environments with routine inspections, and is not physically, chemically or thermally damaged.

1.2.2 Temperature

The LevelVent and AquaVent record temperature compensated water levels. Groundwater and surface water temperature measurements are particularly important in situations where temperatures may fluctuate significantly, and where its accuracy is important in determining liquid level, viscosity and hydraulic conductivity. Temperature monitoring is vital in the calculation of certain temperature dependent contaminant reaction rates. A Platinum Resistance Temperature Detector is used to accurately compensate for temperature changes within the range of 0 to +50°C. The LevelVent and AquaVent will record temperature in the thermal range of -20 to +80°C, but outside the calibrated range, compensation will be less accurate.

Figure 1-5
Vented Logger Measurement Fundamentals

1.3 LevelVent System Components

The LevelVent 5 requires the following components to complete a monitoring system:

- LevelVent 5 Logger
- LevelVent Communication Wellhead
- PC Interface Cable
- Vented Cable
- Solinst Levelogger Software
(free download on solinst.com)



Figure 1-6 Complete LevelVent 5 System

Note: The PC Interface Cable is 2.3 m (7.5 ft) in length.

1.3.1 LevelVent Communication Wellhead

The LevelVent 5 Wellhead is extremely compact and conveniently seats in the opening of a Solinst 2" Well Cap Assembly (a 4" adaptor is also available).

The LevelVent 5 Wellhead has one direct read connection that is used to connect to a PC Interface Cable for communication with Solinst Levelogger PC Software. The Wellhead also allows direct connection to a Levelogger 5 App Interface or DataGrabber 5 (see separate User Guide/Instructions).

Note: There are no batteries in the LevelVent Wellhead. The battery is located in the LevelVent 5 logger and is not user-replaceable.

The Wellhead contains a hydrophobic filter where the Vented Cable terminates at surface. There is no need to replace the filter, it is designed to provide protection from moisture over the lifetime of the instrument. The filter protects the cable from moisture, while still allowing air to flow through the vent tube, resulting in the cancellation effect of barometric pressure on the LevelVent 5 logger.

A 2" Well Cap Assembly is supplied with each Wellhead, along with a Support Hanger Bracket to secure the Vented Cable. See Section 8.1.1 for installation instructions.



Figure 1-7 LevelVent 5 Wellhead

1.4 AquaVent System Components

The AquaVent 5 requires the following components to complete a monitoring system:

- AquaVent 5 Logger
- AquaVent Communication Wellhead and Connector Cable(s)
- Vented Cable
- Solinst Levellogger Software



Figure 1-8 Complete AquaVent 5 System

1.4.1 AquaVent Wellhead and Connector Cables

The AquaVent 5 Wellhead fits conveniently onto a 2" (50 mm) well casing using the well cap base (a 4" adaptor is also available). The SPX Wellhead has a 10-pin connection (Solinst Protocol) for cables communicating with Solinst software and accessories, and a second 12-pin connection for cables communicating with third party dataloggers or telemetry systems using MODBUS or SDI-12 protocols (see separate User Guides).

Note: The Wellhead Connector Cables are 4.5 m (15 ft) in length. The Wellhead Connector Cables to be used with Solinst Software and accessories are identified with an orange band at the 10-pin connection. The 10-pin (Solinst Protocol) connection on the Wellhead is also labeled orange.

There are two cable options for the 10-pin (Solinst Protocol) connection:

- The USB Connector Cable connects to a PC for communication with Levellogger Software.
- App/DataGrabber Connector Cable for connection to a Levellogger 5 App Interface, SRU or DataGrabber 5. See separate User Guide/Instructions.

Note: A Levellogger USB PC Interface Cable can also be used to connect from an App/DataGrabber Connector Cable to the USB Port on a PC.

Each Wellhead comes with 4 user-replaceable 1.5V AA lithium batteries that power the AquaVent (see Section 8.2.1 for battery installation instructions and battery life estimates). They can last 8 years based on 1 reading per minute.

Note: Solinst recommends using 1.5V AA lithium batteries in the Wellhead.

Note: The small internal AquaVent 5 logger battery is only used to maintain the internal clock of the AquaVent 5 logger when it is not connected to the Wellhead, and during any firmware upgrades.

The Wellheads contain multiple desiccants and have a hydrophobic filter where the Vented Cable terminates at surface. There is no need to replace desiccants or the filters, they are designed to provide protection from moisture over the lifetime of the instrument. The filter protects the cable from moisture, while still allowing air to flow through the vent tube, resulting in the cancellation effect of barometric pressure on the AquaVent 5 logger.

A 2" Well Cap Assembly is supplied with each Wellhead, along with a Support Hanger Bracket to secure the Vented Cable. See section 8.2.2 for installation instructions.



Figure 1-9 SPX Wellhead and Connector Cable Options

1.4.1.1 SPX Wellhead LED Status

The AquaVent Wellheads have a multicolour LED light which indicates the status and operation of the AquaVent:

- Fast Multicolour cycle 3 times: Wellhead is powering-on
- Fast 10 cycles alternating blue/green: Wellhead has successfully connected to the PC using the USB Connector Cable
- Fast 10 cycles alternating blue/red: USB connection has been dropped
- Flashing yellow: The Wellhead is communicating with the PC Software over USB

Note: Additional LED definitions for the SPX Wellhead can be found in separate User Guides for SDI-12 and MODBUS.

1.5 Vented Cable

Vented Cables contain power and communication wires, as well as a vent tube running the length of the cable. Vented Cables provide direct read communication from the LevelVent 5 or AquaVent 5 logger to the Wellhead. The vent tube and wires are jacketed in polyurethane, providing durability and protection. The cable is 8 mm (0.320") in diameter, while the connectors are 20 mm (0.790") in diameter.

Note: Before the Vented Cables are shipped, the vent tubes are blown dry with nitrogen gas, and capped, to ensure no moisture during transport.

Vented Cables are custom-built to length. Lengths up to 500 feet are available.



Figure 1-10 Vented Cable

Note: Older style Vented Cables (sold before 4/16/21 with serial numbers lower than 506326) are not compatible with newer style LevelVent 5 Wellheads (sold after 4/14/21 with serial numbers 495959 and up), LevelVent 5 loggers (sold after 4/5/21), AquaVent 5 Wellheads (sold after 7/5/21), and AquaVent 5 loggers (sold after 4/5/21) without a small user modification – contact Solinst for instructions.

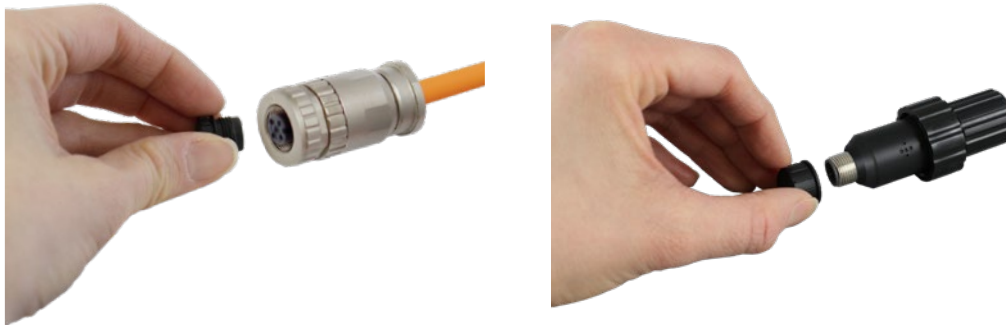
Newer style Vented Cables are compatible with all versions of the Wellheads and loggers – after the new Vented Cable connector is fully tightened, the external o-ring on an old logger or Wellhead is visible and it is normal not to seat against the connector.

1.5.1 Vented Cable Connections

The Vented Cable ends terminate with female twist connections for the LevelVent 5 or AquaVent 5 logger and the Wellheads. Therefore, the Vented Cables are interchangeable (i.e. it does not matter which end is installed on the Wellhead or logger).

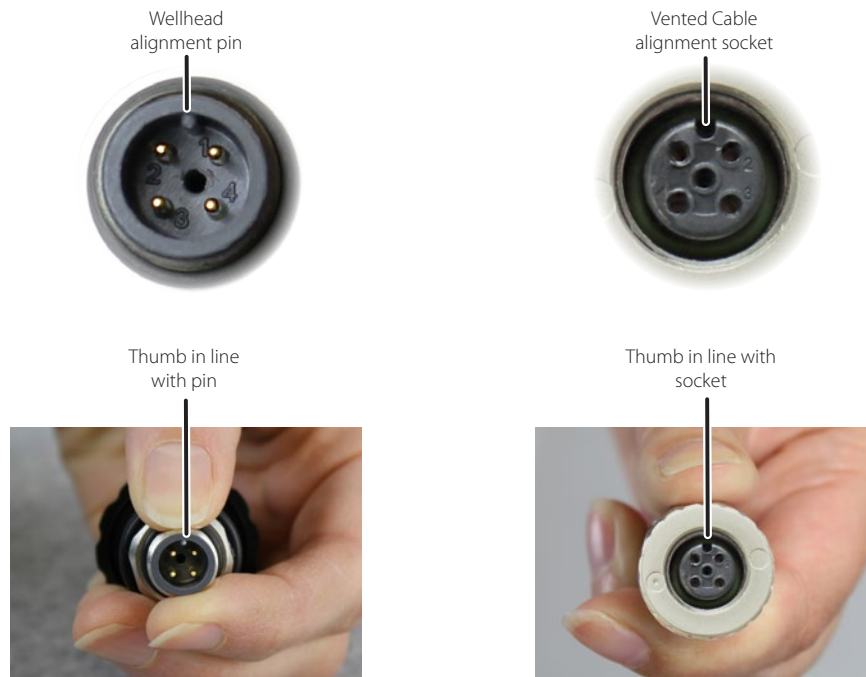
Note: For diagnostic purposes, you may wish to install the end of the Vented Cable with the serial number, to the Wellhead connection at surface.

1.5.1.1 Connecting to the LevelVent Wellhead



Remove the storage caps from the connectors on the Wellhead and Vented Cable.

Note: Ensure you save all the storage caps for future use.



Line up the alignment pin and socket.



Gently push the Wellhead and Vented Cable together and twist slightly until you hear/feel a **small click** when the properly aligned connection is made.



Only tighten the coupling. While holding the Vented Cable and Wellhead still, tighten the coupling until it seats. Do not twist the Vented Cable or Wellhead.

Figure 1-11 Connecting a Vented Cable to the LevelVent Wellhead

Note: Do not turn the Vented Cable when connecting to a Wellhead or LevelVent logger. **Only twist the coupling.**

1.5.1.2 Connecting to the AquaVent Wellhead

Note: See Section 8.2.2 for installing the well cap base and the Support Hanger Bracket for securing the cable when deployed.



Remove the storage caps from the connectors on the Wellhead and Vented Cable.

Note: Ensure you save all the storage caps for future use.

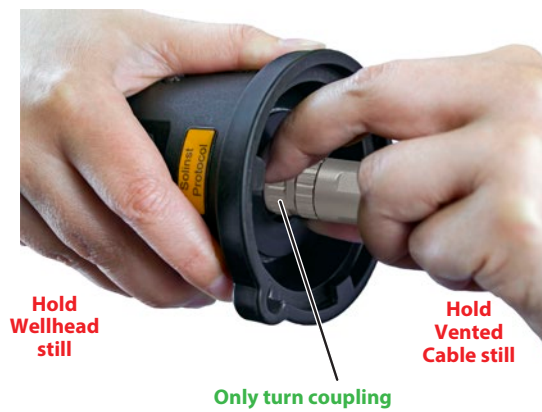


Line up the alignment pin and socket.

Note: For diagnostic purposes, you may wish to install the end of the Vented Cable with the serial number, to the Wellhead connection at surface.



Gently push the Wellhead and Vented Cable together. Twist the cable connector slightly until you hear/feel a small click when the properly aligned connection is made.



Only tighten the coupling. While holding the Wellhead and Vented Cable still, tighten the coupling until it seats. Do not twist the Vented Cable or Wellhead.

Figure 1-12 Connecting a Vented Cable to the AquaVent Wellhead

Note: Do not twist the Vented Cable when connecting to a Wellhead or AquaVent logger. **Only turn the coupling.**

1.5.1.3 Connecting to the Logger



Remove the storage caps from the connectors on the logger and other end of the Vented Cable.

Note: Ensure you save all the storage caps for future use.



Line up the alignment pin in the logger with the alignment socket in the Vented Cable. Gently push together and twist slightly; you will hear/feel a **small click** when the properly aligned connection is made.



Only tighten the coupling while holding the logger and Vented Cable still. Tighten the coupling until it seats.

Do not twist the Vented Cable or the logger.

Figure 1-13 Connecting a Vented Cable to the Logger

Note: Do not twist the Vented Cable when connecting to a Wellhead or logger. **Only turn the coupling.**

1.5.2 Vented Cable Precautions

If the cable needs to bend during installation, ensure the vent tube does not get kinked inside the cable. Do not allow the vent to become squeezed or flattened inside the cable. Flattening or a kink in the tube can cause erroneous barometric compensation. **To avoid crimping the vent tube, do not bend or coil the cable tighter than a 25 mm (1") radius.**

A specially designed Support Hanger Bracket is supplied with each Wellhead for securing the Vented Cable when deployed. See section 8 for instructions to install the bracket.

During installation, be careful not to nick the cable on a sharp edge. Cutting through the protective jacket of the cable can cause moisture to access the wiring inside, which can cause communication issues, or moisture to travel down the cable.

2. Solinst Levelogger Software

This Windows® based software provides many convenient features. You can view and program datalogger settings, begin logging sessions, monitor real-time readings, download data, manage data files, perform data adjustments, and save and export data files.

Note: It is always recommended to use the most recent version of software and firmware. Let Solinst keep you up-to-date with each new software and firmware release. Register your software at: <https://downloads.solinst.com> to receive these updates automatically.

Levelogger Software is used to program all Solinst dataloggers. The software intuitively detects the type of datalogger connected, and will only display the setting options specific to that datalogger type.

2.1 System Requirements

The minimal hardware and software requirements for software installation and operation are:

Hardware	Software
Processor: 1 GHz or faster processor or SoC	OS: Windows 10 & 11
RAM: 1 GB for 32-bit or 2 GB for 64-bit	
Hard disk space: 128 MB	
Display: 800 x 600	
Ports: USB or RS-232	

Communication port setting for datalogger communications:

Bits per second	9600
Data bits	8
Stop bits	1
Flow control	None

2.2 Software Installation

Web Download

1. Download the newest version of Levellogger Software by visiting: <https://downloads.solinst.com>
2. If the installer does not automatically start, to activate the software install click on the 'setup.exe' file.
3. The Software Installation Wizard will guide you through the remaining installation process. Figure 2-1 shows the Software Installation Wizard.
4. Restart the computer after installation is completed. Default Directory is:
C:\Program Files\Solinst\Levellogger4_6

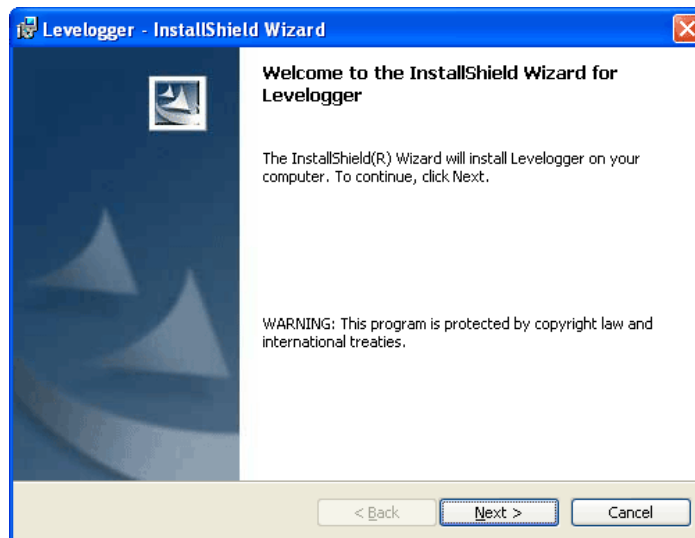


Figure 2-1 Found New Hardware Wizard

2.3 Software Communication

Levellogger Software is Windows based, and is therefore used with a desktop or laptop PC.

The LevelVent communicates to a laptop or desktop PC using a USB PC Interface Cable connected to the LevelVent Wellhead.



The AquaVent communicates to a laptop or desktop PC using a USB Connector Cable connected to the AquaVent Wellhead. The USB Connector Cable connects to the 10-pin (Solinst Protocol) connection.




Figure 2-3 AquaVent 5 Communicating with Levellogger Software

3 Software Startup, Configurations and Settings

3.1 Startup

Plug in the USB cable **before** starting the Levellogger Software.

To start the software, click , or click the Start button and select:

Programs > Solinst > Levellogger 4 > Levellogger 4.6.3

Once the program is started, you can set up the parameters for the Software.

3.1.1 Software/Firmware Update Checks

Each time the software is opened, it automatically checks on-line for software updates. If there is an update, "[Software Update Available](#)" will appear in the top right of the menu bar. When you click the message, it will open a web page where you can download the software update.

Note: Your PC must have an internet connection to check for software and firmware updates.

The Software also checks for firmware updates once you have retrieved settings from a connected datalogger (see Section 4). "[Firmware Update Available](#)" will appear in the top right menu bar. Clicking the message will open a web page where you can download the firmware update. See Section 11 for firmware update instructions.

Note: You can also check for updates using the Help menu.

3.2 Configuration and Settings

3.2.1 Data Directory

The program will save downloaded data to the following default directory:

<C:\Program Files\Solinst\Levellogger4_6\Data>

unless otherwise specified in the Default Directory field of the Application Settings window (Figure 3-1).

Click the Configuration menu at the top of the program window, select Application Settings and input or navigate to a different folder destination. After completing the Application Settings, click the OK button to confirm and save the settings.

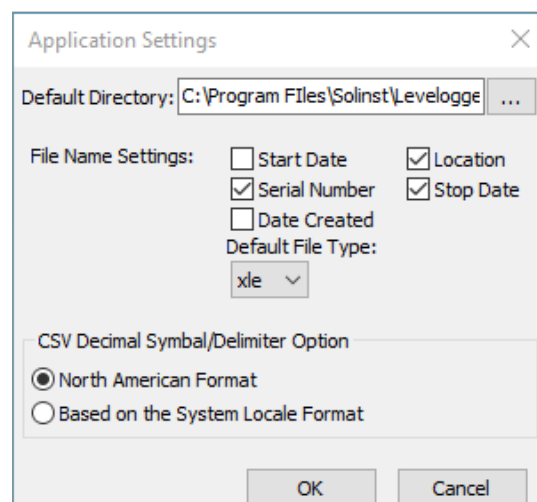


Figure 3-1 Application Settings Window

3.2.2 File Name Settings

From the Application Settings window in the Configuration menu, you can set what information will be included in your default file names of downloaded data (see Figure 3-1). You can include Start Date, Stop Date, Date Created, Serial Number, and Location. Check-off the information you would like included.

After completing the Application Settings, click the OK button to confirm and save the settings.

3.2.3 Default File Type

From the Application Settings window in the Configuration menu, you can set the default file type you would like to use for downloaded, saved and exported data files. You can select between either *.xle (default) or *.lev file types (see Figure 3-1). For more information about the two file types, see Section 5.1.1.

You also have the option to choose between North American Format for decimal separators (period symbol) or based on the System Locale Format, for exported *.csv files.

After completing the Application Settings, click the OK button to confirm and save the settings.

4 Datalogger Programming

After you start Levellogger Software, the Main Window will appear, with the Datalogger Settings tab open. Select the appropriate device from the centre Com Port drop-down menu.

Click to retrieve the current settings from the connected datalogger.

Note: Click on icons to get an explanation of that software feature.

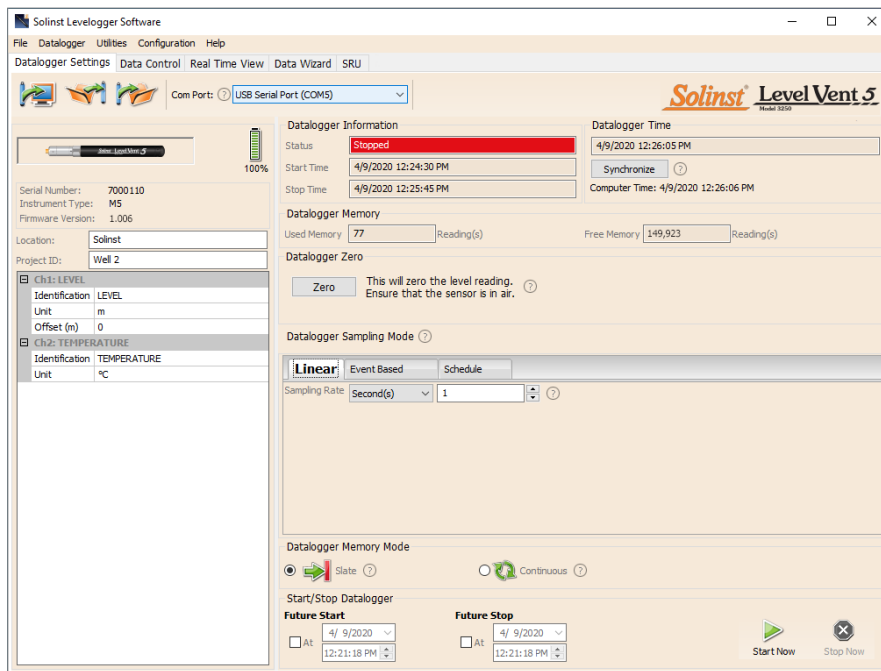


Figure 4-1 Dataloggers Settings Tab - LevelVent 5

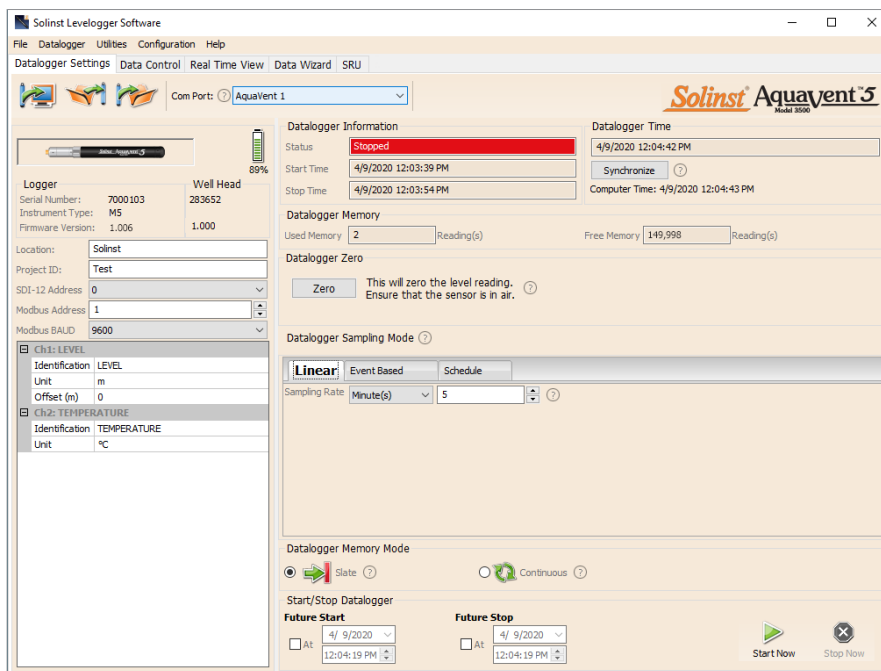


Figure 4-2 Dataloggers Settings Tab - AquaVent 5

Note: After retrieving the settings, If the AquaVent Wellhead batteries have drained to 20% charge or lower, a warning message will appear to replace the batteries.

4.1 Datalogger Settings

After you have retrieved the settings of the connected datalogger, the Datalogger Settings tab will identify the Instrument Type, Serial Numbers, Firmware Version(s), Project ID, Location, Battery Level and the Channel Settings.

- **Instrument Type:** will display the model of the attached datalogger, i.e.: M5
- **Serial Number:** the unique serial number of the attached logger will be displayed. If an AquaVent is connected, the serial number of the Wellhead will also be displayed.
- **Firmware Versions:** shows the firmware version of the connected logger. If an AquaVent is connected, the firmware version of the Wellhead will also be displayed.
- **Project ID:** input your own identification system. The Project ID is limited to 32 characters.
- **Location:** input specific site / location information. The location is limited to 32 characters.

The MODBUS and SDI-12 Address, and Baud Rate settings are only for use when using the 12-Pin Wellhead connection. See separate User Guides for communication using MODBUS and SDI-12 protocols.

4.1.1 Setting Up Channel Information

In the lower left portion of the Datalogger Settings tab is the area for setting channel parameters (level, temperature). The software will detect the available channels when the datalogger settings are retrieved.

4.1.1.1 Level Channel (Ch1)

- **Identification** describes the measurement parameter of the channel and has already been configured as 'LEVEL'. The channel can be re-named to suit each project. The channel monitors water column equivalent pressure. The Identification field will be the channel heading, data column heading and graph line name when viewing the data. Identification is limited to 32 characters.
- **Unit** refers to the channel's unit of measurement. There are six options for water level measurement: m (default), cm, ft, kPa, bar, and psi.
 - Note:** Readings can be converted to other units using the Data Wizard.
- **Offset** refers to an adjustment, such as the distance between the tip of the logger and the monitoring well cap or static water level. It is recommended that the value of 0.00 be used, as this keeps all subsequent readings relative to the tip of the logger. The reference range is -300 m to 5000 m or -1000 to 16,400 ft.
 - Note:** Readings can be corrected or offset with respect to a specific reference elevation or datum for a much wider spectrum of numeric offsets as part of the Data Wizard.

☐ Ch1: LEVEL	
Identification	LEVEL
Unit	m
Offset (m)	0
☐ Ch2: TEMPERATURE	
Identification	TEMPERATURE
Unit	°C

Figure 4-3 datalogger Channel Setup

4.1.1.2 Temperature Channel (Ch2)

- **Identification** describes the measurement parameter of the channel and has already been configured as 'TEMPERATURE'. The channel can be re-named to suit each project. The Identification field will be the channel heading, data column heading and graph line name when viewing the data. Identification is limited to 32 characters.
- **Unit** refers to the channel's unit of measurement. The temperature channel can be set to °C (default) or °F.

4.2 Datalogger Information

The Datalogger Information section shows the Status of the attached datalogger (i.e.: Started, Stopped, Future Start) and the Start Time and Stop Time of the datalogger. When a Future Start and/or Stop time is set (see Section 4.9), the Start Time and Stop Time fields will fill in. The fields will update each time the datalogger is stopped and started.

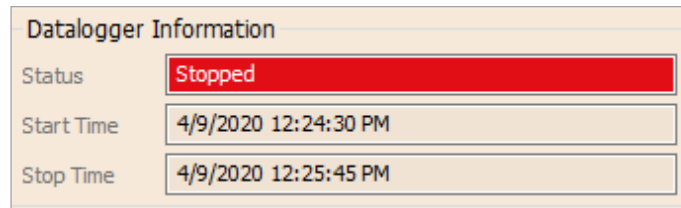


Figure 4-4 Datalogger Information

4.3 Datalogger Memory

The Datalogger Memory section shows the amount of memory used, and the amount of memory remaining (number of readings).

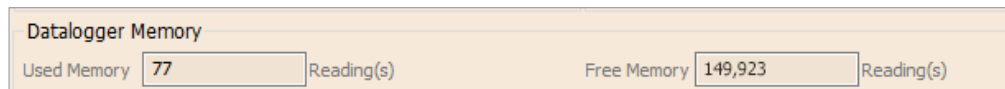


Figure 4-5 Datalogger Memory Remaining

4.4 Datalogger Time

The Datalogger Time section provides the controls for setting the datalogger clock. If you want to synchronize the datalogger’s clock to the computer clock, click Synchronize to set the time in the datalogger.

If you start the datalogger without synchronizing the clock and the time difference between the datalogger and the PC is more than 3 seconds, the software will give you a message asking ‘Do you want to synchronize the logger time to system time?’. Click Yes to synchronize the clock.

Note: To synchronize to a different time/time zone you first must adjust the computer time using the Windows Operating System Date and Time Settings menu. Then re-start the Solinst Levelogger Software and synchronize your dataloggers to the new time.

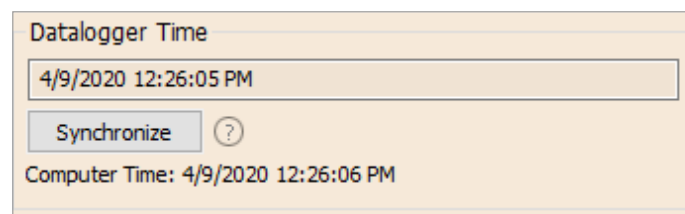


Figure 4-6 Datalogger Time

4.5 Datalogger Sampling Mode

The Datalogger Sampling Mode section allows you to choose the sampling measurement type. Options for the LevelVent and AquaVent are Linear, Event Based and Schedule.

Linear refers to a set time interval between collection of readings. Sample Rate can be any number from 0.125 seconds to 99 hours.

Note: Typical battery life of the LevelVent 5 logger is 10 Years, based on 1 reading per minute. More rapid readings will reduce the battery life. For example, if a LevelVent is setup in Continuous Mode at a sampling rate of 1 second, the battery will be depleted in approximately 4 months.

Note: The battery life of the AquaVent Wellhead is 8 Years, based on 1 reading per minute. More rapid readings will reduce the battery life. For example, if an AquaVent is setup in Continuous Mode at a sampling rate of 1 second, the battery will be depleted in approximately 3 months.

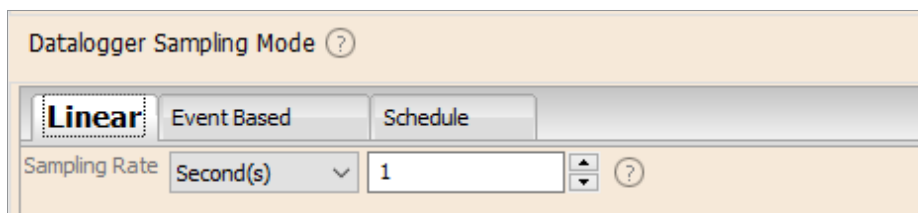


Figure 4-7 Linear Sampling Setup

Event Based sample collection is the most memory efficient means of data collection. In Event mode, the datalogger will be activated at every defined 'Sample Rate' to check if readings have changed by the selected 'Change' from the last recorded reading.

'LEVEL' or 'TEMPERATURE' is the selected parameter where change is monitored. The datalogger will record a new reading only if the specified change in the parameter has occurred, at the specific point in time, as defined by the 'Sample Rate'.

Note: In Event based sampling mode, the LevelVent 5 and AquaVent 5 have a total memory of 60,000 readings of level and temperature. In Event Based sampling mode, the LevelVent and AquaVent have a total memory of 24,000 readings of level and temperature.

A default reading will also be stored in the datalogger memory, every 24 hours from the last recording, if no 'Change' occurs.

Note: In Event Based sampling mode, battery consumption is mainly a function of sampling rate. Therefore, with a smaller sampling interval, battery power will be used up quickly whether readings are stored or not.

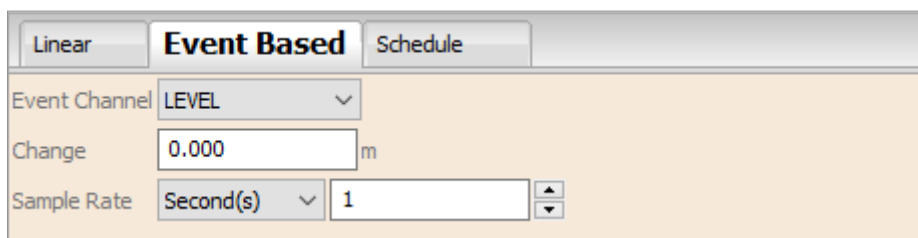


Figure 4-8 Event Based Sampling Setup

Schedule Sampling allows you to select a logarithmic style sampling schedule adapted to the needs of each application.

Schedule Sampling is set by using the plus and minus buttons to add or subtract line items in the Schedule window. The maximum number of line items in a schedule is 30, each with its own sampling interval of seconds, minutes or hours and duration of seconds, minutes, hours, days or weeks. A 'Pause' interval can also be selected, which stops the datalogger from recording for the specified duration.

Note: A schedule can be saved and applied to other dataloggers by saving the Settings file (see Section 4.7).

Running totals of the number of readings still available, from the total possible, and the run time to date are shown. If the number of readings selected exceeds the datalogger's memory capacity, an error message appears.

By checking Repeat, the datalogger will continue to run through the schedule until its memory is full, or it is stopped.

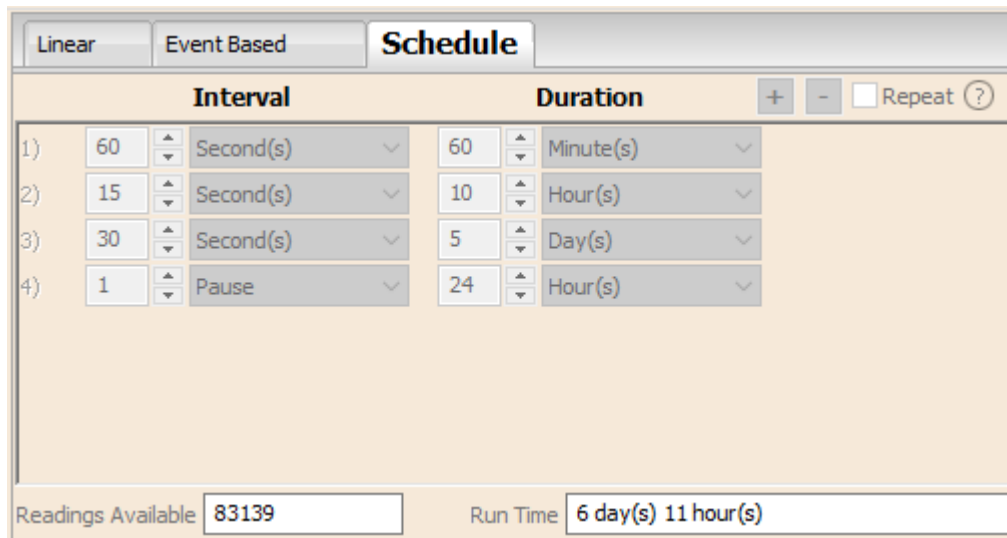




Figure 4-9 Schedule sampling Setup

4.6 Datalogger Memory Mode

Datalogger Memory Mode selection will only appear when **Linear** sampling mode is selected. When using a datalogger in Linear Mode, there is a choice of **Continuous** Logging (wrap around)  or **Slate** Logging .

Linear, Event Based and Schedule sampling modes can only use the Slate Mode option.

In Continuous Logging, the new log is started at the end of any previous log and continues logging, eventually recording over the first logged data. As one of the download options is to 'Append Data', Continuous Logging can be a preferred choice when logging long-term (see Section 5.1.2).

In Slate Logging, the new log is also started at the end of any previous log, but will stop recording after 150,000 (or 40,000) readings, so that the beginning of the current log will not be written over.

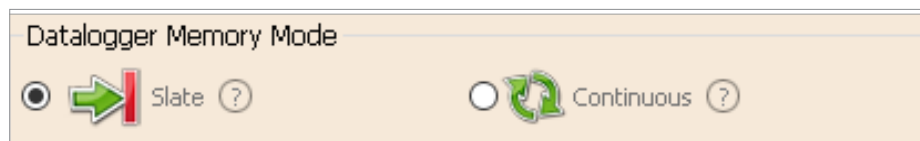


Figure 4-10 Datalogger Memory Mode

4.7 Saving and Retrieving Datalogger Settings Files

To store settings as defaults, click . It will store the settings of the datalogger into an *.dtf file as a series of defaults. The *.dtf file will save the Project ID, Location, Sample Mode, Sample Rate, Channel ID, Unit, and Offset.

To retrieve settings from defaults, click from a selected *.dtf file. This is particularly useful if programming several dataloggers with similar or identical settings. Keep in mind that Project ID and Location identification information will be identical and should be distinguished from logger to logger or monitoring point to point.

4.8 Datalogger Zero

Before starting and deploying your datalogger, you can “Zero” it to current atmospheric pressure. This will ensure that it is reading 0 in air for the level reading.

Note: To check your datalogger’s readings in air, use the Real Time View function. See Section 7.

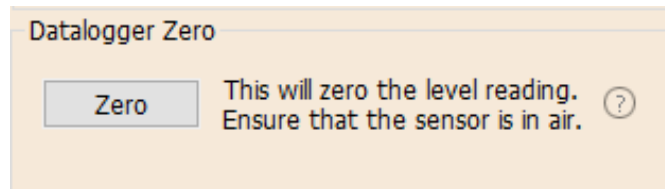


Figure 4-11 Datalogger Zero

After clicking **Zero**, the current time will be displayed as the “Last Zero Time”.

Note: You can not perform a Datalogger Zero while the datalogger is running.

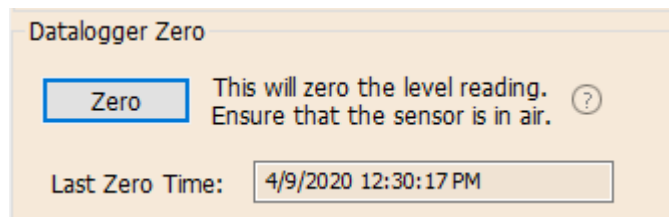


Figure 4-12 Last Zero Time

The Datalogger Zero can be cleared using the Diagnostic Utility. See Section 10.

4.9 Starting and Stopping the Datalogger

Starting the Datalogger

There are two ways to start logging: **Start Now** or by programming a **Future Start** time.

To start logging immediately, do not fill in a Future Start time and click, . It should say Start Now below the icon to indicate an immediate start.

Before starting a LevelVent 5 or AquaVent 5 datalogger, a pop-up window will indicate how much memory is available. Selecting “Yes” ignores the message and starts the datalogger immediately with the remaining available memory. Selecting “No” gives you the chance to access the Data Control tab to download and/or delete data files using the “Download and Delete Files” option, to free-up memory (see Section 5).

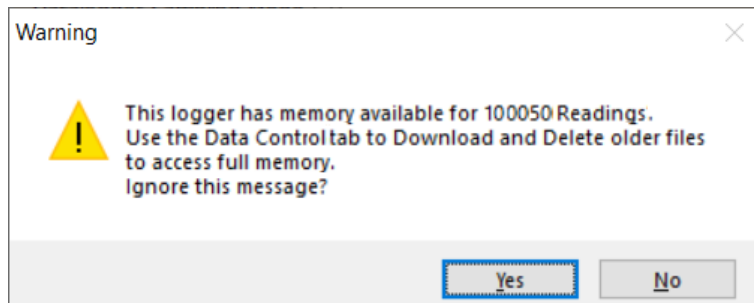


Figure 4-13 Remaining Memory Warning

When starting a new logging session with a previous version LevelVent or AquaVent, any data from the previous recording session will be erased (see Section 5 for downloading data).

Note: If a setting has been changed, it will be highlighted in yellow as a reminder before the datalogger is started. If a setting has been entered incorrectly, it will be highlighted in red.

After selecting “Yes” any changed settings will automatically be applied to the datalogger, and it will start logging. Datalogger Status will change from Stopped to Started.

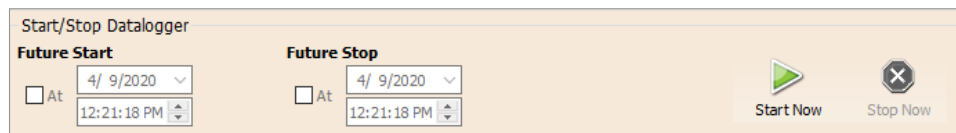


Figure 4-14 Starting the Datalogger Immediately

After the datalogger is started, and begins collecting readings, the Start icon will be greyed out, and only the Stop icon and Future Stop settings will be active.

Check **Future Start** 'At' to set logging to start at a later date and/or time. This Start mode is referred to as Future Start in the Status field. Click to apply the Future Start time and any changes to the datalogger settings.

When the Future Start time is reached, the datalogger will start logging and the Status will change from Future Start to Started.

Note: Retrieve the datalogger settings in order to refresh the status (i.e. when the status changes from Future Start to Started).

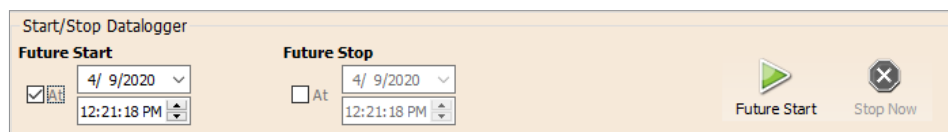


Figure 4-15 Future Start Setting

Stopping the Datalogger

There are two ways to stop logging: **Stop Now** or at a programmed **Future Stop** time for the datalogger.

To stop the datalogger immediately when it is logging, click  , (it should say Stop Now below the icon).

The datalogger can be stopped at any time before it reaches the maximum reading capacity. **Starting again begins a new recording session and clears previously stored data readings.**

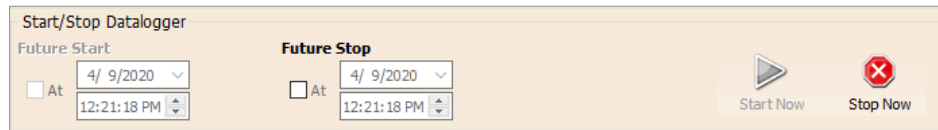




Figure 4-16 Stopping the Datalogger immediately

To program a **Future Stop** time for your datalogger, check Future Stop 'At' and fill in the desired stop time. The Future Stop time will be applied to the datalogger once  is selected for an immediate or future start.

You can also program a Future Stop time after you have started the datalogger, by checking Future Stop 'At' and filling in the desired stop time. Select  to apply the Future Stop time (it should say Future Stop below the icon).

Note: If you have set a Future Stop time, but wish to stop the datalogger immediately, uncheck the Future Stop 'At' box, and the Stop icon should say Stop Now. Click the icon to stop logging.

The Stop Time should be shown in the Datalogger Status section.

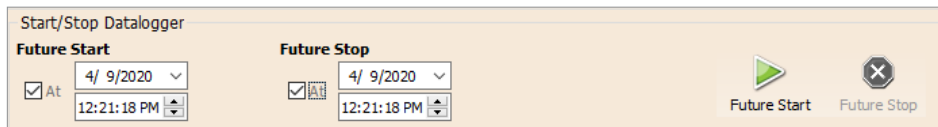


Figure 4-17 Future Stop Setting

It is critical to note that when the datalogger logs data in Slate mode, it means it will record data until stopped or their memory is full. For this reason, it is important to determine, based on your start time and sampling rate, the date and time at which the memory will be full and the datalogger will stop recording. The datalogger records in Slate mode if Event or Schedule logging. Linear mode, however, can be set to Slate or to Continuous logging.

5 Data Control

(Downloading and Viewing Data using Levelogger Software)

Click the Data Control tab on the Main Window. From the Data Control tab you can download data from a datalogger, display data in tabular or graphic format, and save and export data files.

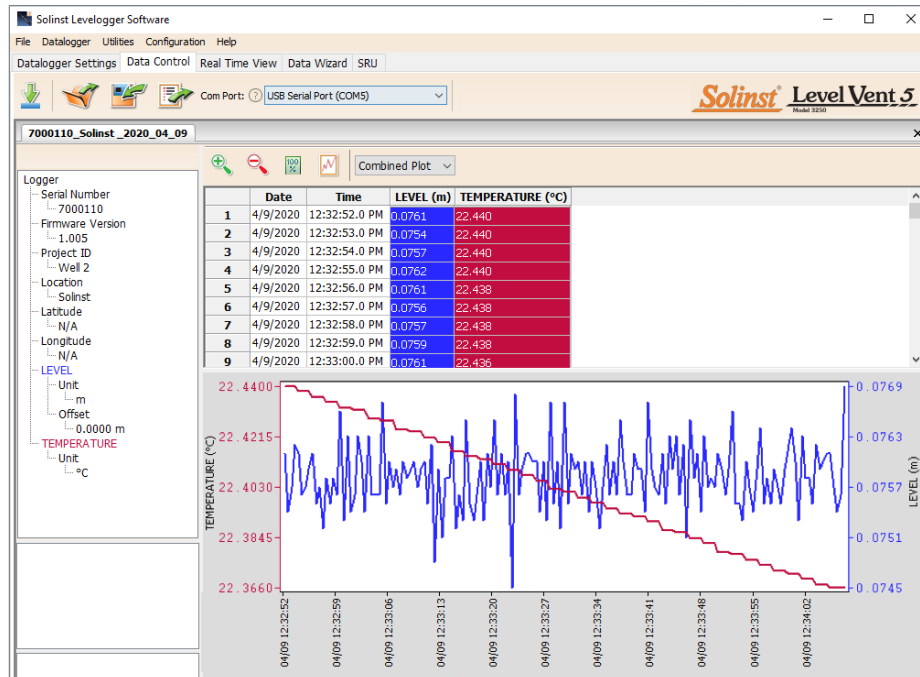


Figure 5-1 Data Control Tab

Click to open a *.xle or *.lev file. Multiple files can be opened at the same time and are available for viewing by clicking the File Name Tab on top of the data table.

Note: When you click on a data point in the graph, the corresponding data point will be highlighted in the table. You can also highlight a section of data in the graph.

All the datalogger settings and the channel information effective during data collection are shown on the top left of the window. The bottom left sections of the window are used to display information after a data compensation has been performed, such as offsets or unit conversions (see Section 6).

5.1 Downloading Options and Saving Data Files

5.1.1 Default File Format

The default file type for Levelogger Software Version 4 and up is *.xle, unless changed to *.lev in the Application Settings (see Section 3.2.3). Previous Levelogger Software used *.lev files as the default. The *.xle file type is a *.xml format, which allows for enhanced functionality. The *.xle files can be exported as *.xml files, which can be integrated into external database programs.

Note: The default file type is *.xle, unless changed in the Application Settings (see Section 3.2.3).

The *.lev files of previous downloads are compatible with Levelogger Software Version 4 and up, however, *.xle files are not compatible with previous software versions. To ensure compatibility, all Levelogger Software versions allow data to be exported as *.csv files for use in external spreadsheet programs. See Section 5.3 for Export options.

5.1.2 Downloading Data

Before downloading data you must select the Com Port that the datalogger is connected to and retrieve the settings from the attached datalogger by clicking  in Datalogger Settings tab.

Click  from the Data Control tab to download data from a connected datalogger. There are four download options to choose from.

For **LevelVent 5** and **AquaVent 5** dataloggers, they are: **All Data**, **Append Download**, **Partial Download** and **Download and Delete Files**.

For previous **LevelVent** and **AquaVent** dataloggers, they are: **All Data**, **Append Download**, **Partial Download** and **Recover Previous Log**.

If you select **All Data**, the program will download all the data from the current logging session of a datalogger into a *.xle file.

The default directory for saved data is in the 'Data' folder: <C:\Program\Files\Solinst\Levelogger4_6\Data>.

If you select **Append Download**, the program will append the data in an opened *.xle file from the datalogger. The opened *.xle file and the attached datalogger should have the same serial number and start time, otherwise an error will occur.

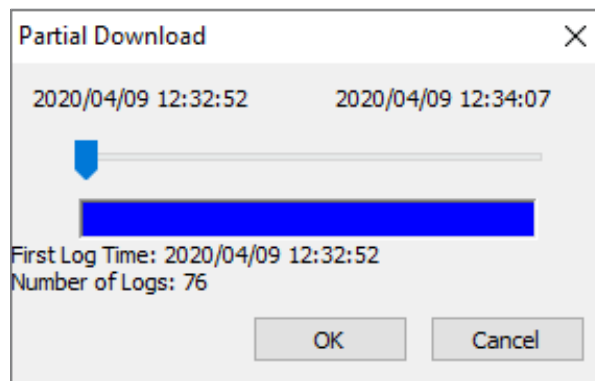


Figure 5-2 Partial Download Window

If you select **Partial Download**, a Partial Download Selection Window will open. The window shows the time stamp of the first and last reading in the logging session. Use the slider to select the time interval you would like data from. Once you click OK, all the data within that time will be downloaded to a *.xle file.

For LevelVent 5 and AquaVent 5 dataloggers, if you select **Download and Delete Files**, the software will bring up a window with a list of logging sessions currently stored in the datalogger’s memory. Select the files you want to download. Each logging session will be saved as a separate *.xle file.

To access the full memory, select Delete All Files and you will be prompted with a “Warning All Data in the logger will be erased! Continue?” Select Yes, or No, to proceed. (Selecting individual files for deletion, is not an option.) This will free-up memory before starting a Levellogger 5 Series datalogger (See Section 4.9).

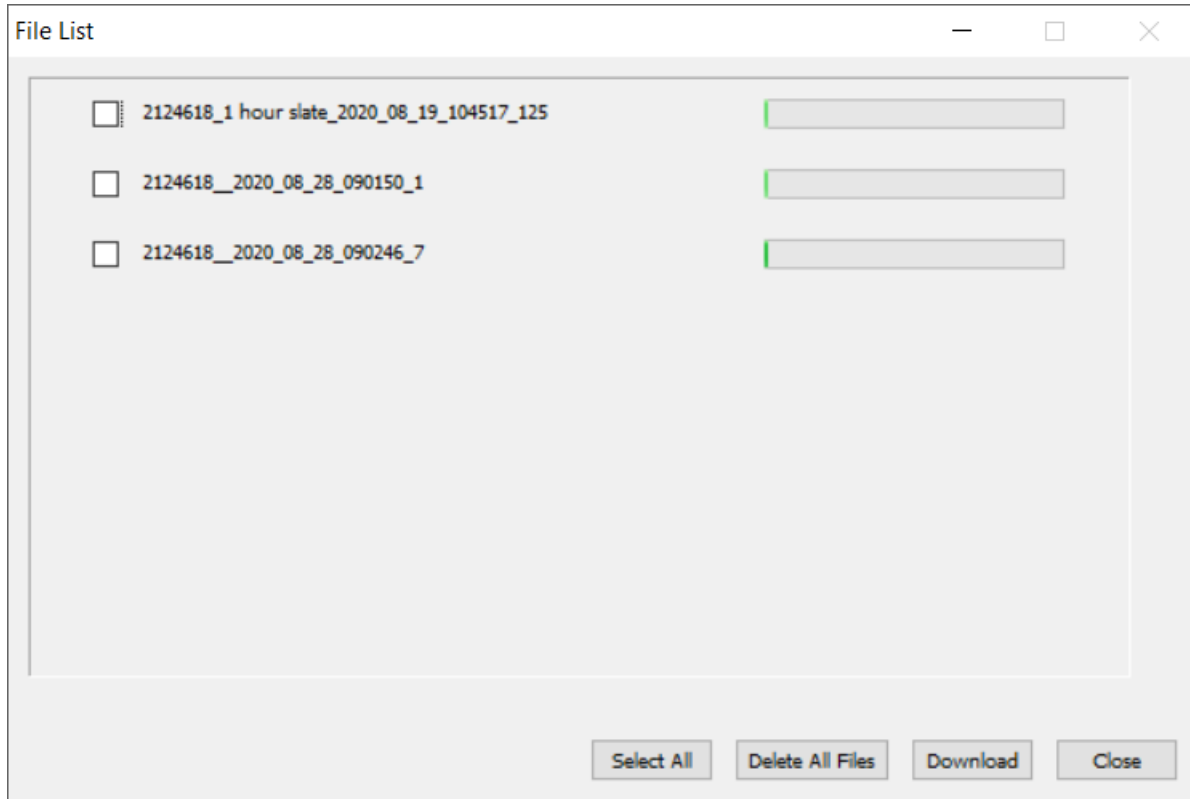


Figure 5-3 Download Files List

For previous version LevelVent and AquaVent dataloggers, if you select **Recover Previous Log**, the software will try to recover the data from the previous log session and download the data to a *.xle file.

Once the data is downloaded from a datalogger, it is automatically saved in a temporary file.

5.1.3 Saving Data

Click  to save the data in a specific *.xle file.

The default directory for saved data is in the ‘Data’ folder:
 <C:\Program\Files\Solinst\Levellogger4_6\Data>.

However, the default directory for saved files can be changed by clicking the Configuration menu at the top of the program window, selecting ‘Application Settings’ and inputting or navigating to a different folder destination. If an error is experienced in saving your first data file such as depicted in Figure 5-4, you may not have file writing privileges to the default directory. In this case, create and set as the default file save folder, a new data folder within the My Documents folder and attempt the file save procedure again.

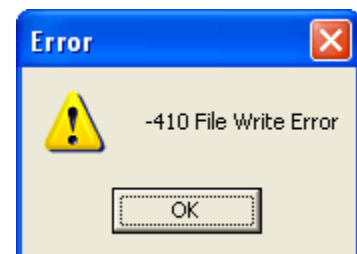


Figure 5-4 File Write Error Message

5.2 Graph Manipulation and Zoom Function

To perform the Zoom In function on the graph, click .

To perform a Zoom Out function on the graph click . Click  to undo all the zoom functions.

The Zoom functions can also be used for data selections in the graph.

Note: Right click, and drag the mouse to scan the data graph.

Click  to open the Graph Option Dialog. The Graph Dialog is shown in Figure 5-5.

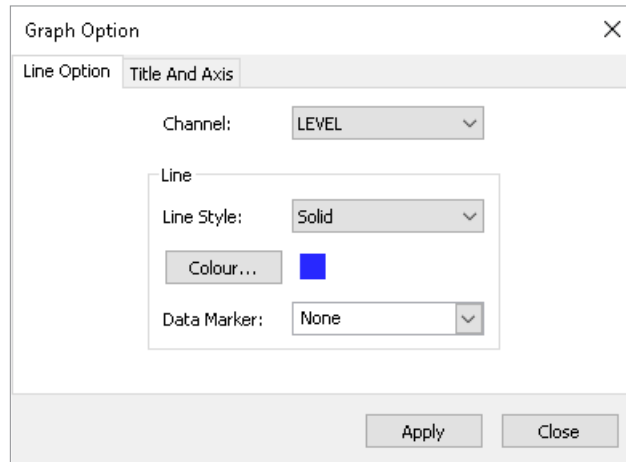


Figure 5-5 Line Option Window

The Line Option is used to adjust the style and colour of the line in the graph for each channel. The user can also select the shape of the data marker or remove the data marker.

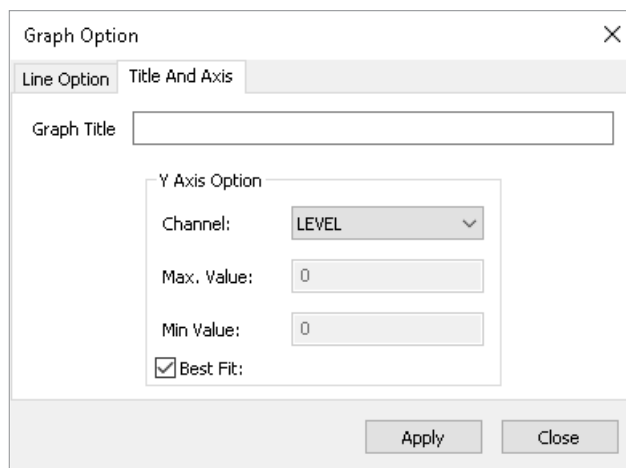


Figure 5-6 Title and Axis Option window

The Title and Axis Option is used to enter the title of the graph and change the Y axis label or user selected scale. Check the Best Fit box to enable the software to determine the best fit scale. If the Best Fit box is not checked, the user has to enter a maximum and minimum value of the selected channel. The X axis is logging time.

There is the option to show Combined Plot graphs or Separated Plot graphs of the data. Choosing a Combined Plot will show the data from each of the channels in one graph. The Separated Plot option will show a separate graph for each data channel.

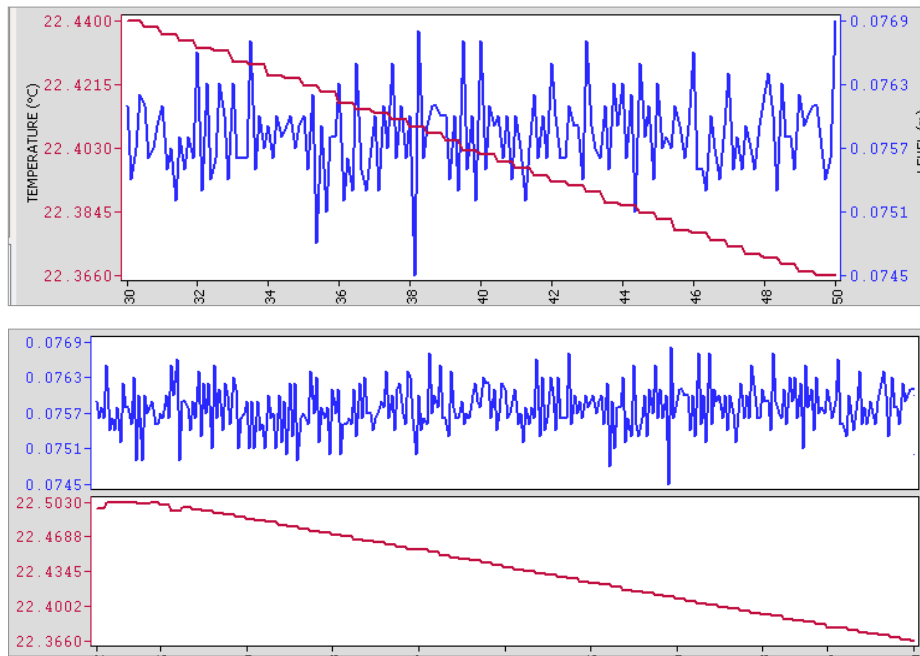


Figure 5-7 Combined and Separated Plot Graphs

There is also the option to view more than one graph at a time. Click and drag a File Name Tab and drop it when you see a shaded area on the window to open a separate graph of that data file. You can view any number of graphs at one time by re-sizing your window as required.

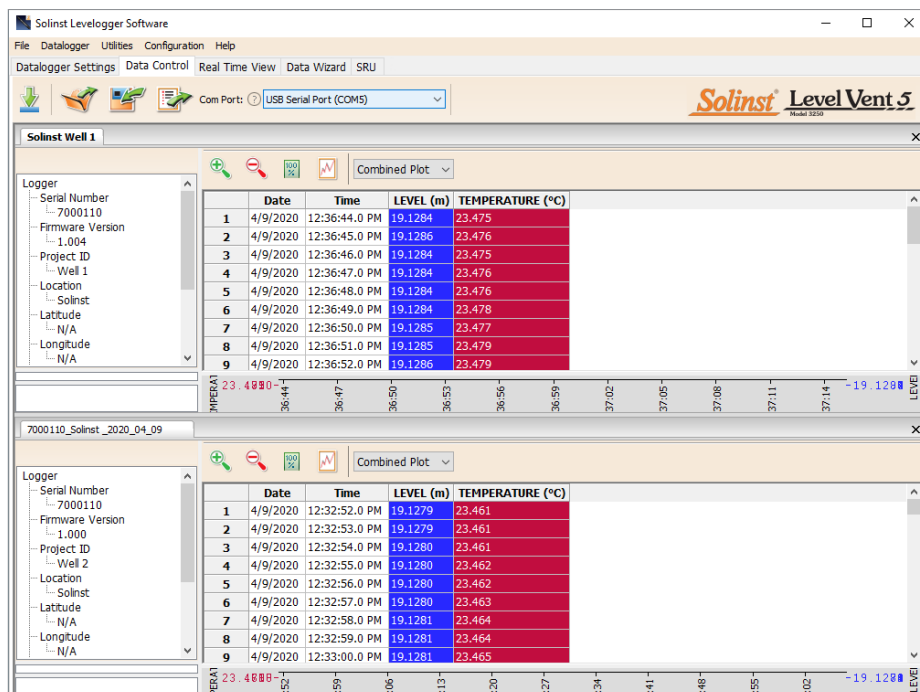



Figure 5-8 Viewing Two Graphs

5.3 File Export and Print Function

Data can be exported in *.csv (comma separated value) file format or *.xml (extensible markup language) file format by clicking File > Export > Data or 

The *.csv and *.xml file formats are supported and can be imported by most spreadsheet and database programs.

Also, the data graph can be exported to a *.bmp file or a *.png file by clicking File > Export > Graph.

The Datalogger Settings, data table and data graph can be printed. Click File > Print Preview, to open the Print Preview window. Figure 5-9 shows the print preview of the Datalogger Settings. The Datalogger Settings are always on the first page of the document. The data graph is on the second page of the document and the rest of the document is the data table.

Click Print..., to open the print dialog. You can choose to print the entire document or just a selection. You can also click File > Print, to open the print dialog.

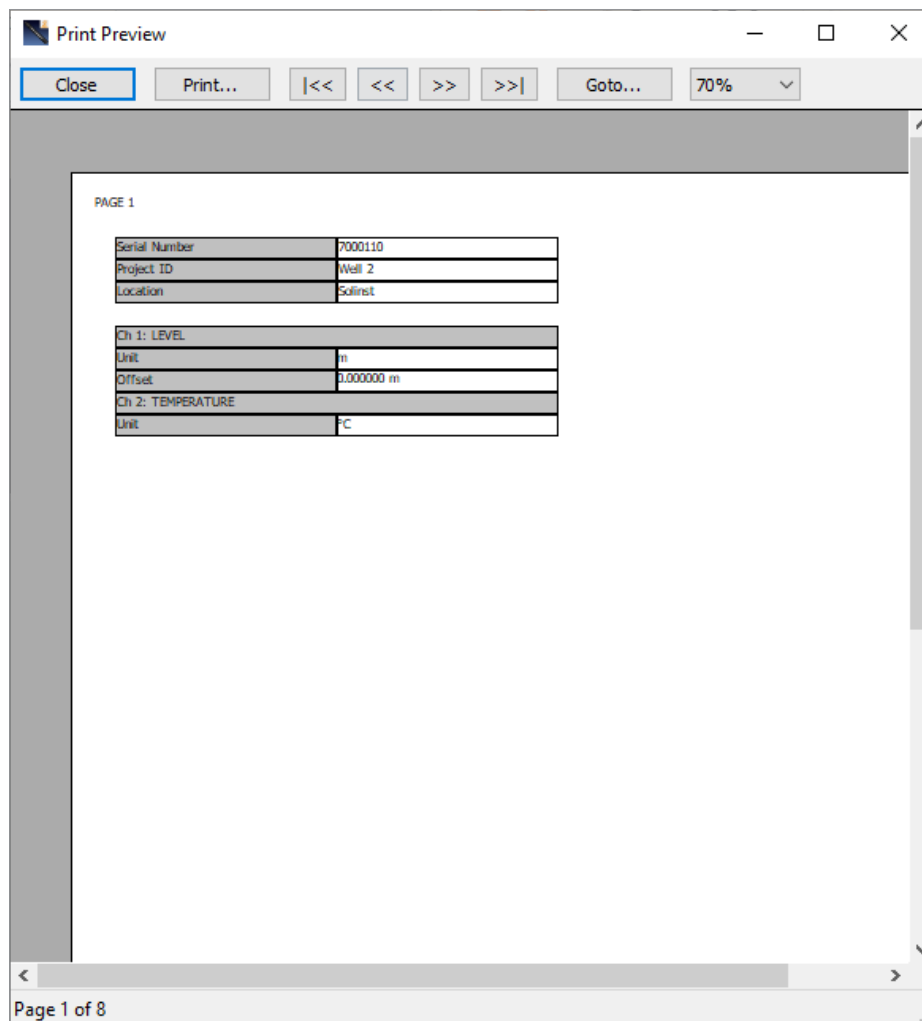


Figure 5-9 Print Preview Screen

6 Data Compensation

Data Compensations, such as Manual Data Adjustments and Parameter Adjustments can be performed automatically using the software Data Wizard, or manually, by exporting data to an external spreadsheet program.

6.1 Data Wizard

Open the Data Wizard tab. The first step is to select your Data Compensation Path. The LevelVent 5 and AquaVent 5 will only have the Advanced option available.

Note: Multiple data files can be compensated at once.

The **Advanced** option allows you to perform Manual Data Adjustments and Parameter Adjustments.

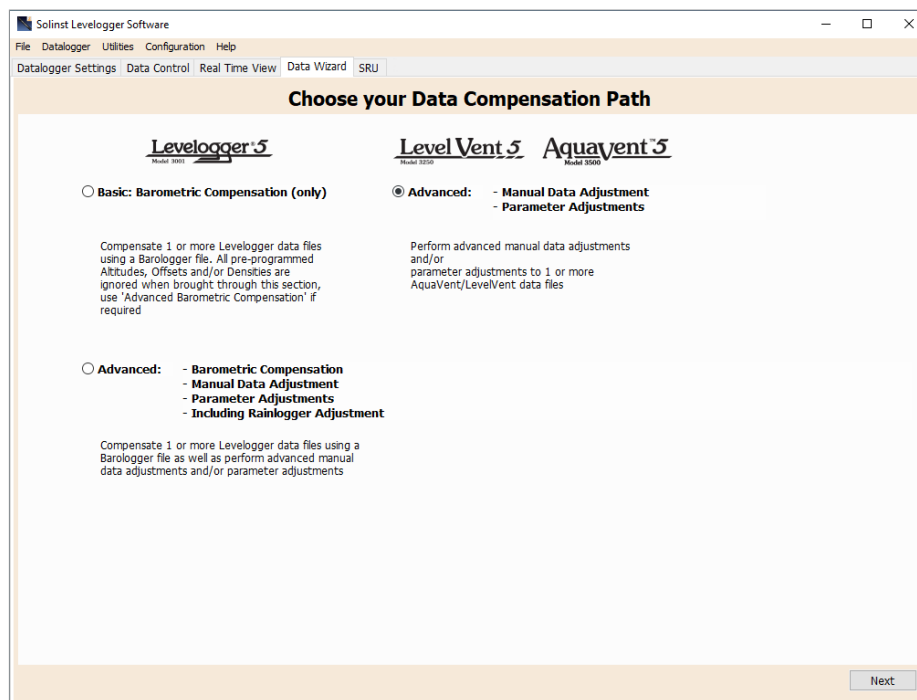


Figure 6-1 Data Wizard

Manual Data Adjustment allows you to enter a manual water level measurement or reference point as a field zero, which all water level readings can then be adjusted to. There is the option to convert readings to Depth to Water Level measurements (e.g. from the top of a well casing to water level), or Elevation of Water Level measurements (e.g. above sea level).

Note: Manual Data Adjustment, and Parameter Adjustments are useful for correcting data files to make data consistent across a project.

Parameter Adjustments allow you to change data to different units of measurements, add an offset, or adjust density.

- **Unit** conversion allows you to convert level readings in a data file to different units (m, cm, ft, kPa, bar or psi), or temperature readings to °C or °F,
- **Offset** allows you to enter any value, positive or negative, which will be added to each reading in the selected data file to be offset by that amount. It is recommended to stay with the default zero value, unless a known offset has been determined (e.g. to correct for pressure sensor drift. See [Solinst Technical Bulletin: Understanding Pressure Sensor Accuracy, Precision, Resolution & Drift](#)).
- **Density Adjustment** corrects the range of the level channel in the data file based on a user input adjustment of fluid density. The range of the density adjustment is from 0.9 kg/L to 1.1 kg/L.

When you select **Advanced** compensation, the Data Compensation Options window will open.

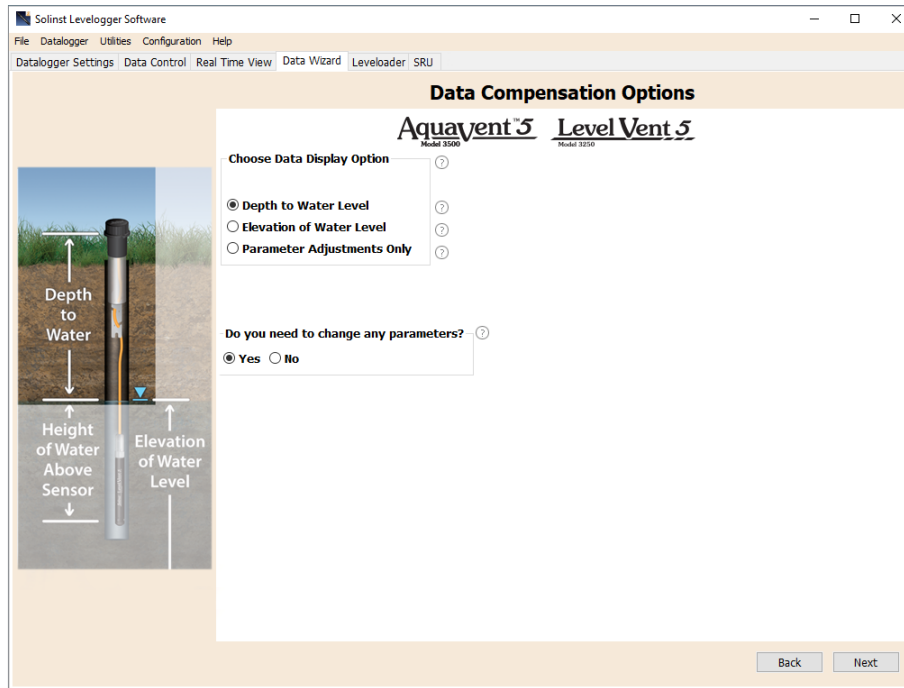


Figure 6-2 Data Compensation Options

First, you will select how you want your data displayed (Manual Data Adjustment):

- **Depth to Water Level** adjusts water level data to represent depth to water level readings (from the top of a well casing or other reference point) by entering a field zero, such as a manual depth to water level measurement. Adjustments can be made to one or more data files.
- **Elevation of Water Level** adjusts water level data to represent elevation of water level readings (above sea level or other reference point) by entering a measuring point elevation, and a field zero, such as a staff gauge measurement from that point. Adjustments can be made to one or more data files.
- **Parameter Adjustments Only** allows you to adjust one or more data files to different units, density, etc., while keeping the sensor diaphragm (zero point) as the reference point for datalogger.

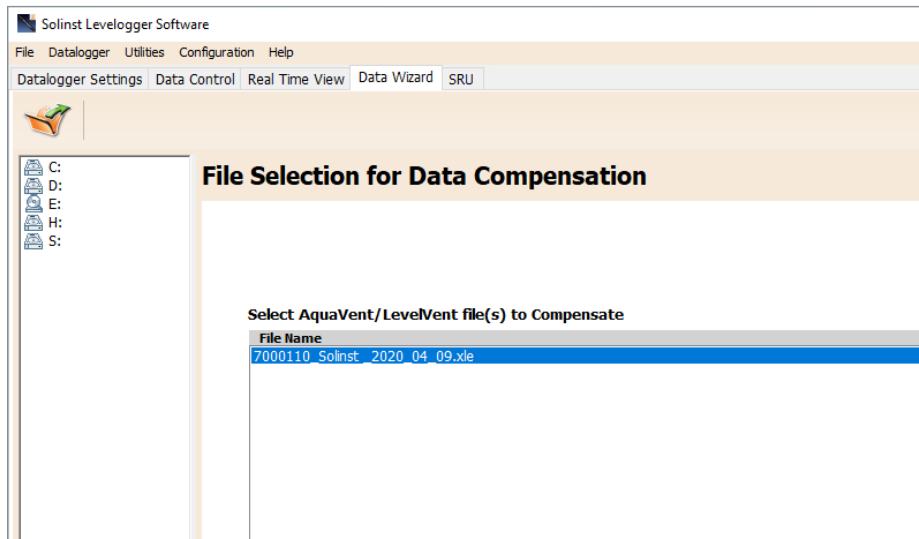
Next, you will select Yes or No to performing any **Parameter Adjustments** on the data files (will not be active if you selected Parameter Adjustments Only).

Click Next, after you have selected all of your Data Compensation options.

In the next window, you will choose the data file(s) you would like to use in the compensation. Any files you have open in the Data Control tab will be listed.

Use the directory on the left of the window or click to open any other data files you would like to compensate. Ensure the files you want to compensate are highlighted in the list. Do this by clicking the file name. To de-select a file, click again. Select Next to continue.

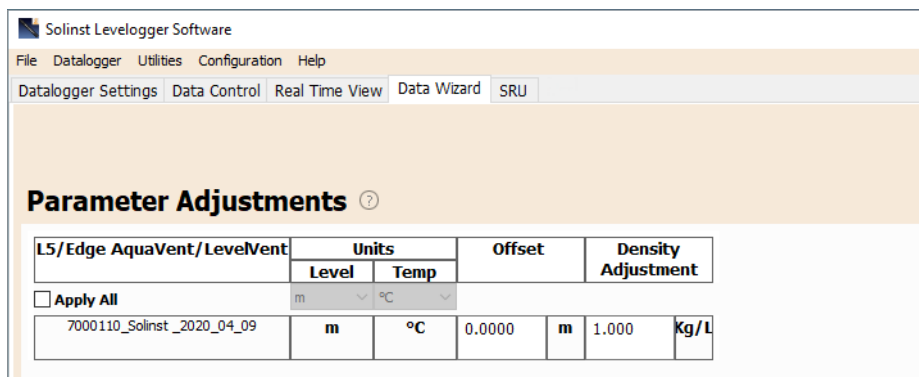
Figure 6-3 Selecting Files for Compensation



If you have selected yes to **Parameter Adjustments**, or selected the **Parameter Adjustments Only** option, in the next window you will enter these. If you did not select to change any parameters, this window will not be shown.

Note: When adjusting Units, if you select apply to all, the same unit change will be applied to all of the files being compensated at that time.

Figure 6-4 Parameter Adjustments



Next, for each selected data file, you will enter the Field Zero(s) you would like to use to manually adjust your water level data. (If you have selected **Parameter Adjustments Only**, this window will not be shown.)

For **Depth to Water Level** adjustments, enter a **Field Zero (A)**. If the static water level is below your Field Zero measurement, the Field Zero is input as a positive value (e.g. a manual water level meter measurement taken from the top of a well casing. See Example 6.1). If the static water level is above your Field Zero, the Field Zero is input as a negative value (such as in a flowing artesian sealed wellhead condition).

The Time the Field Zero measurement was taken must replace an actual reading in the data file. This is selected from the drop-down menu showing all time stamps in the data file. Click 'Add' to apply the adjustment. If you need to change a Field Zero, click 'Update' after any edits.

Note: The date and time of measurement of the Field Zero must be recorded to complete the adjustment. The Field Zero must replace an actual reading the data file. I.e. take a manual measurement immediately after starting the datalogger, and note that time.

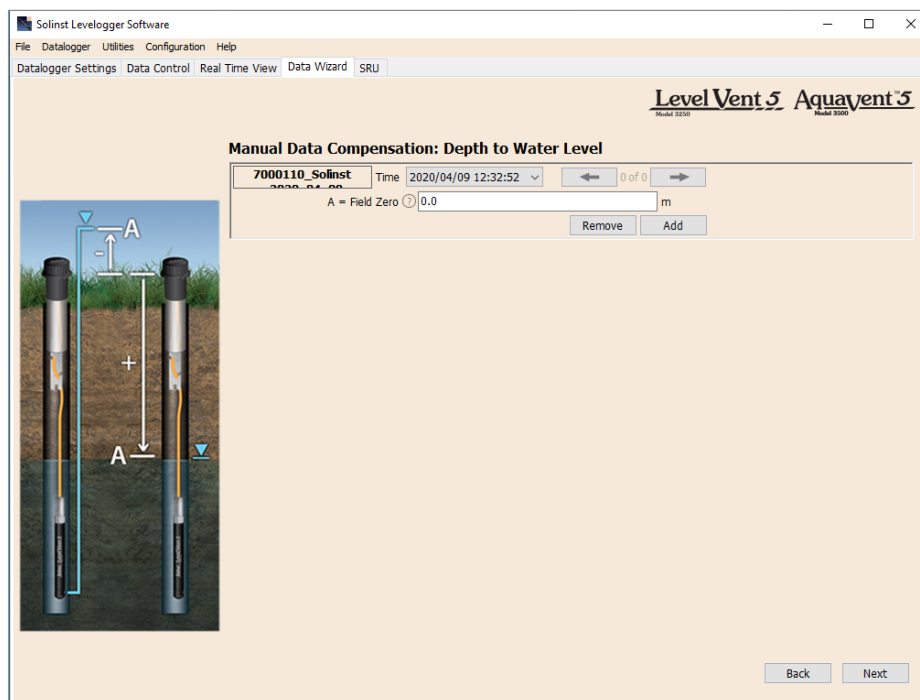
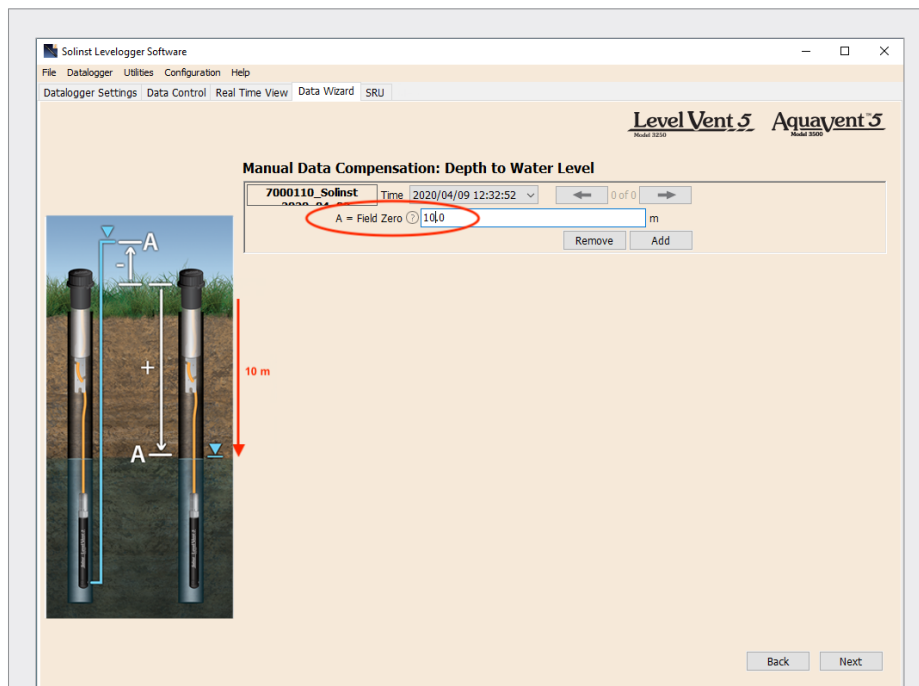


Figure 6-5 Manual Data Adjustment - Depth to Water Level



Example 6.1 Depth to Water Level Adjustment

When using a manual depth to water measurement taken from the top of a well casing as a Field Zero, enter it as a positive value (e.g. 10 m).

In your adjusted data file, your readings will increase in value as the water level decreases. This is because the depth to static water level from the top of the well casing is increasing. The adjusted readings will decrease in value as the static water level rises.

Original Data (height of water above sensor)	8.75 m	8.50 m	8.75 m	9.5 m	9.75 m
Adjusted Data (depth to water)	(A) 10.0 m	10.25 m	10.0 m	9.25 m	9.0 m

For **Elevation of Water Level** adjustments, enter a **Measuring Point Elevation (A)** and a **Field Zero (B)** from that Measuring Point.

If the static water level is below your Measuring Point, the Field Zero is input as a positive value (e.g. if you are using a manual depth to water measurement as a Field Zero, from the top of a well casing as the Measuring Point).

If the static water level is above your Measuring Point, the Field Zero is input as a negative value (such as in a flowing artesian sealed wellhead condition). The Measuring Point elevation may also be entered as a negative value.

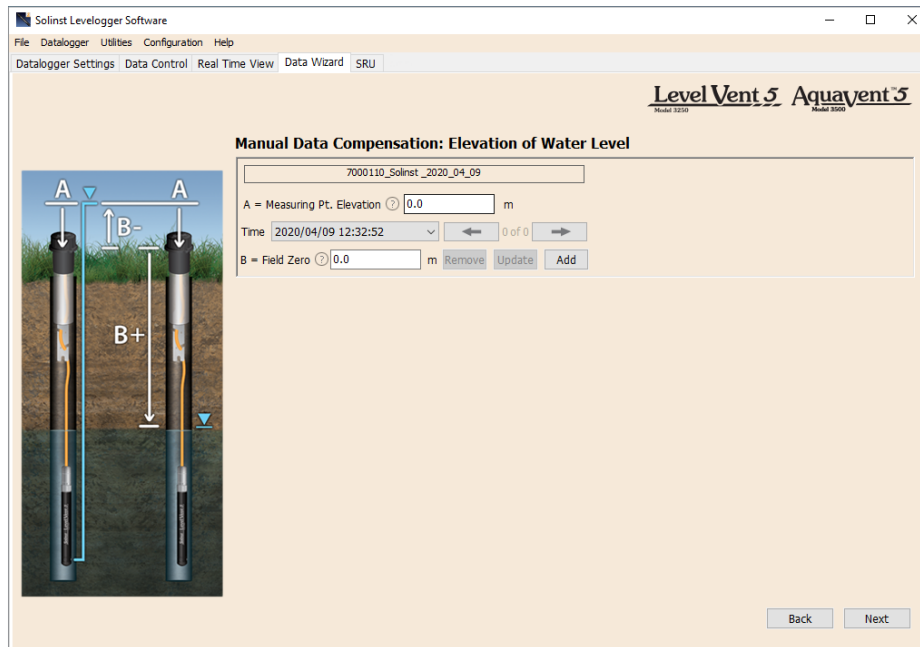


Figure 6-6 Manual Data Adjustment - Elevation of Water

The Time the Field Zero measurement was taken, must replace an actual reading in the data file, and is selected from the drop-down menu showing all time stamps in the data file. Click 'Add' to apply the adjustment. If you need to change a Field Zero, click 'Update' after any edits.

Note: The date and time of measurement of the Field Zero must be recorded to complete the adjustment. The Field Zero must replace an actual reading the data file, i.e. take a manual measurement immediately after starting the datalogger, and note that time.

You can make multiple adjustments to one data file by selecting 'Add' again to enter another Field Zero. All readings after this Time, will be adjusted to this second measurement. You can add as many adjustments to one data file as you would like (as long as it doesn't exceed the total number of readings in that file).

Select Next to complete the compensation.

The compensated data will automatically be saved in a new *.xle file. The default file name will be the <original file name> with the word <compensated> added to the file name prefix. Alternatively, the user can rename the compensated file by saving it in the Data Control tab. Do not change or delete the file extension. All data files are saved to the default location: <C:\Program Files\Solinst\Levellogger4_6\Data>.

Note: All data files are saved to the default location: <C:\Program Files\Solinst\Levellogger4_6\Data>. However, the default directory for saved files can be changed by clicking the Configuration menu at the top of the program window, selecting 'Application Settings' and inputting or navigating to a different folder destination.

The next window will show the results of the compensation. If the compensation was unsuccessful, there will be an explanation in the Reason column. You can still view the compensated file in the Data Control tab, by clicking 'Open' in the Action column. If the compensation is successful, select 'Open', to view the compensated data file in the Data Control tab.

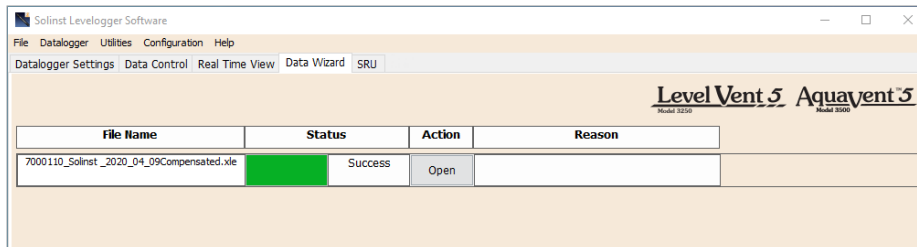


Figure 6-7 Data Compensation Results

If you have selected multiple files for compensation, there will also be the option to 'Open All' of the compensated files in the Data Control tab or 'Export All' of the compensated files at the same time. Options are to export as *.csv files or *.xml files.

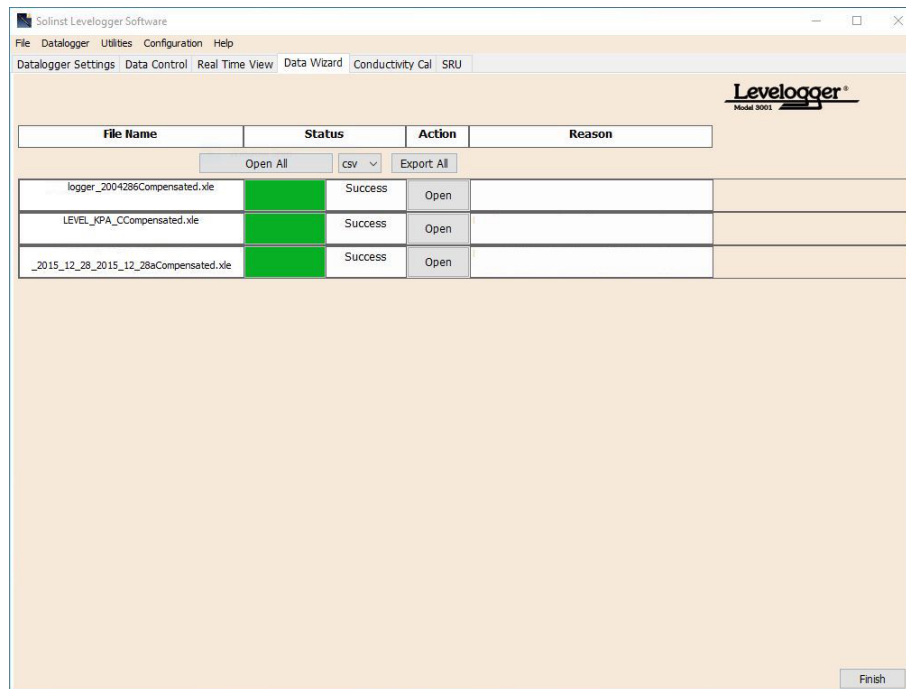


Figure 6-8 Data Compensation Results – Multiple Files

From the Data Control tab, you can view the data, save the compensated file with a new filename and/or export the data (see Section 5).

All the original datalogger settings and the channel information effective during data collection are shown on the top left of the window. The bottom left sections of the window are used to display the compensation information.

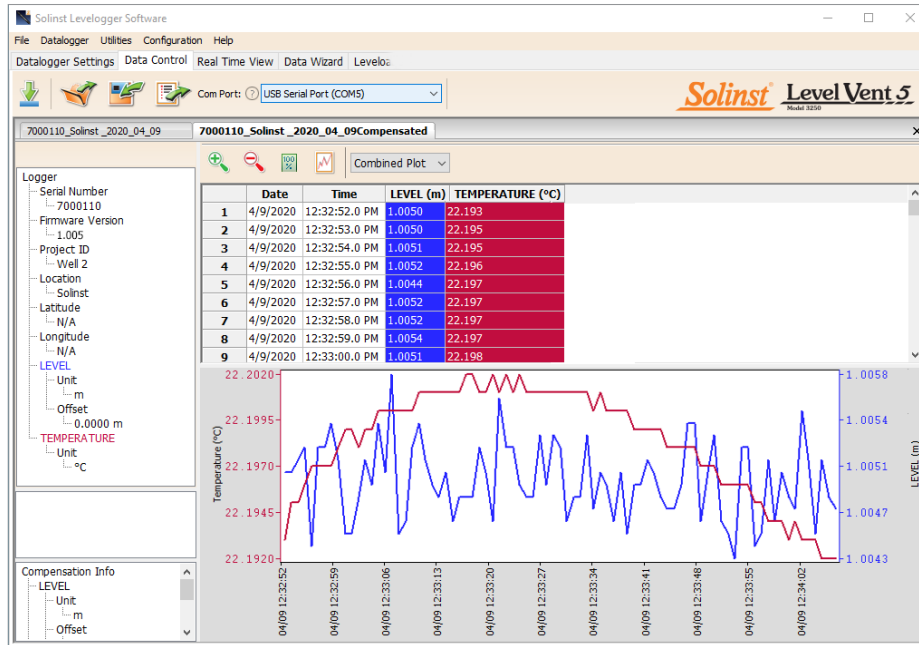



Figure 6-9 Viewing Compensated Files in the Data Control Tab


7 Real Time View

Click the Real Time View tab from the Main Window (Figure 7-1). The purpose of this tab is to provide on-screen measurement as data is being recorded by the connected datalogger. The data is displayed in tabular and graphical format. All the channel information and datalogger settings are displayed on the left of the window.



First, select a non-logged view rate  1 . This rate can be set independently of the logging period of the datalogger and does not interfere with any logging taking place in the LevelVent 5 or AquaVent 5 itself.

Checking, **Enable Manual Data Adjustment**, allows you to enter a datum/ field zero (e.g. depth to water level) to which the change in Real Time View level measurements are then adjusted against. This is only available when you are taking readings in m, cm, or ft.

Datalogger settings can not be changed in the Real Time tab. Changes must be made in the Datalogger Settings tab. The changes are applied when the Real Time readings are started. 

Real Time View readings can be displayed as a graph or in tabular format. The same graphing options as the Data Control tab are available for Real Time View readings. Real Time View readings are being recorded within the Levellogger Software and prior to closing the window, they can be saved by exporting the data into a *.csv file, by choosing the file export option .

To start the current readings, click . The readings will be displayed immediately.

To take a reading at any specific time, click the  button and that reading will be added to the displayed data. To turn the Real Time View monitoring off, decide if you want to save the data as described above, and simply click .

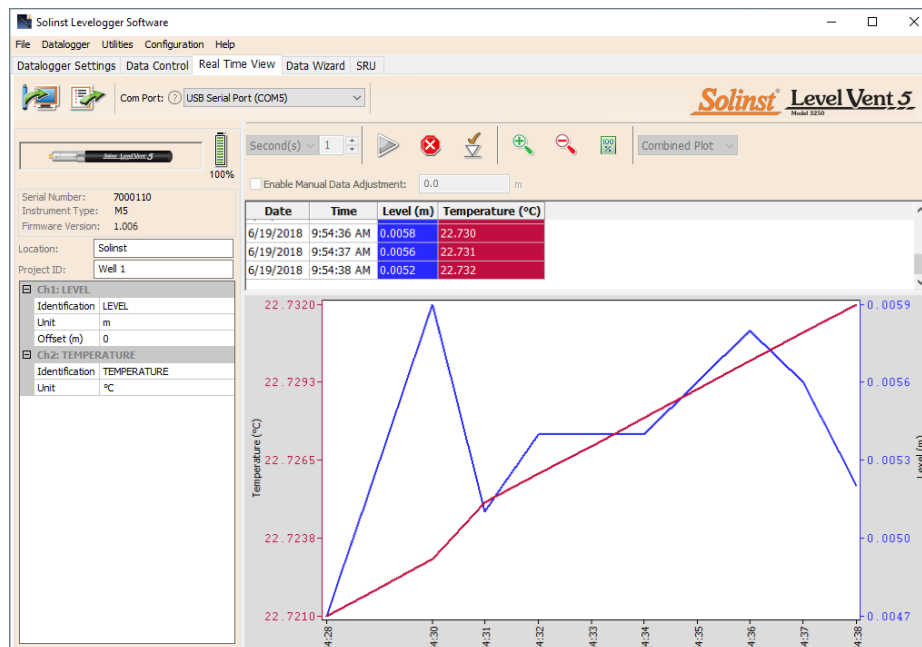


Figure 7-1 Real Time View Window

8 Vented Datalogger Installation

8.1 Installing the LevelVent

The LevelVent 5 system is designed to be conveniently installed on a 2" well casing (4" with an adaptor). However, other installations are acceptable, if proper precautions and recommendations are followed.

The LevelVent Wellhead has an IP rating of 64 (dust and splash resistant), so should not be submerged at anytime. It can be secured inside an enclosure, however, it must be vented to equalize atmospheric pressure. The Wellhead measures 30 mm x 76 mm (1.2" x 3.0").

Begin by ensuring you have correctly connected your LevelVent 5 logger to the Vented Cable, and the Vented Cable to the Wellhead. See Section 1.5.1 for connection instructions. See Section 8.1.1 for installation using the 2" Well Cap Assembly and the Support Hanger Bracket.

8.1.1 Installing LevelVent in 2" Well

Each LevelVent Wellhead comes with a Support Hanger Bracket and a 2" Well Cap Assembly, which consists of an insert, well cap base and well cap.

The 2" Well Cap Assembly insert has two openings which can be used to install and support a LevelVent Wellhead. The second opening can be used to take manual water level measurements while the LevelVent 5 logger is recording down-well. When the openings are not in use, two red plugs are supplied with the assembly.

Note: A third 0.7" ID access hole allows additional monitoring equipment in the well, such as a Water Level Meter for manual field measurements.

Note: To accommodate 4" wells, a separate adaptor is available for use with the 2" well cap base.



Figure 8-1 2" Well Cap Assembly, Adaptor, and Support Hanger Bracket

The steps below show how to install the LevelVent using the Support Hanger Bracket and 2" Well Cap Assembly:



Connect the Vented Cable to the Wellhead and the LevelVent 5 logger. See Section 1.5.1 for more details.

Note: For diagnostic purposes, you may wish to install the end of the Vented Cable with the serial number, to the Wellhead connection at surface.

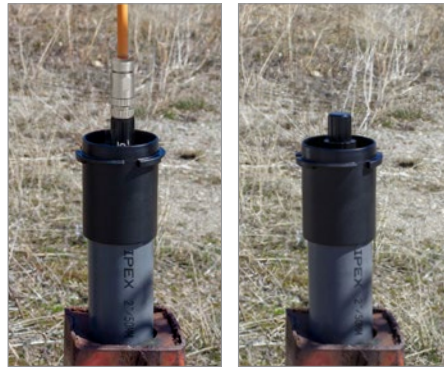


Slide the well cap base onto the well casing. Do not secure it at this point.



Place the Support Hanger Bracket in the well cap base so it seats on the shoulder in the base. Place the insert into the well cap base.

Note: There are three holes in the top of the Support Hanger Bracket that can be used to secure it in the well cap base with screws.



Remove one of the red plugs from the insert. Lower the LevelVent 5 logger and Vented Cable through the opening and down the well until the Wellhead seats in the insert. Remove the other red plug from the insert and **take a manual depth to water measurement for your records.**



Lift the well cap base with Support Hanger Bracket and insert from the well casing. Wrap the Vented Cable around the Support Hanger Bracket and slide into the cutouts to secure the cable to the bracket.

Note: The holes in the bracket can accommodate twist ties or zip ties to secure the cable to the bracket if desired.



Lower the well cap assembly back onto the well casing. Secure the well cap base to the well casing if desired. Install the well cap. **Note,** you may need to remove the dust cap from the LevelVent Wellhead before installing the well cap.

Figure 8-2 Installation using the 2" Well Cap Assembly and Support Hanger Bracket

8.2 Installing the AquaVent

The AquaVent 5 system is designed to be conveniently installed on a 2" well casing (4" with an adaptor). However, other installations are acceptable, if proper precautions and recommendations are followed.

Note: Consider the use of an extended top cap style protective well head. This would allow full access to the AquaVent Wellhead components at the top of the monitoring well.

The AquaVent Wellheads have an IP rating of 64 (dust and splash resistant), so should not be submerged at anytime. They can be secured inside an enclosure, however, it must be vented to equalize atmospheric pressure. The Wellhead measures 102 mm x 140 mm (4.0" x 5.5").

Ensure you connect your AquaVent 5 logger to the Vented Cable, and the Vented Cable to the Wellhead. See Section 1.5.1 for connection instructions. See Section 8.2.2 for installation using the well cap base and the Support Hanger Bracket.

8.2.1 Installing AquaVent Wellhead Batteries

Note: After retrieving the settings in Levelogger Software, if the Wellhead batteries have drained to 20% charge or lower, a warning message will appear to replace the batteries.

Each Wellhead uses four (4) 1.5V AA replaceable lithium batteries. To install the batteries, follow the steps below:

1. Unscrew the top of the Wellhead to access the battery compartment.
2. Carefully remove the battery holder from the compartment.
3. Install the four batteries in the holder. Ensure proper polarity when placing the batteries, paying attention to the positive (+) and negative (-) symbols etched in the holder.
4. Slide the battery holder back into the compartment. Ensure proper alignment; the spring contacts in the housing should be lined up with the protruding contacts on the bottom of the battery holder.
5. Screw the top cap firmly back onto the Wellhead.
6. After replacing the batteries, to reset the battery indicator in the Levelogger Software, use the Diagnostic Utility (see Section 10.6).



Figure 8-3 Installing Wellhead Batteries

8.2.1.1 Wellhead Battery Life Estimates

AquaVent Sampling Rate	Battery Life Estimate
8 readings per second	10 days
1 reading per second	3 months
1 reading per minute	8 years

8.2.2 Installing AquaVent in 2" Well

The Support Hanger Bracket is used to secure the Vented Cable to the Wellhead when deployed.

The support system consists of the 2" well cap base and the Support Hanger Bracket (both come with the Wellhead). To accommodate 4" wells, an adaptor is available for use with the 2" well cap base.

Note: A 2" Well Cap Assembly comes with each AquaVent Wellhead. Only the base of the assembly is needed to install the Support Hanger Bracket. The cap can be used later to seal a well, if the AquaVent Wellhead is removed.



Figure 8-4 Well Cap and Base, Adaptor and Support Hanger Bracket

The steps below show how to install the AquaVent using the Support Hanger Bracket in a 2" well:



Install the well cap base on the well casing.



Wrap the top end of the Vented Cable around the Support Hanger Bracket and insert into the cutouts to secure the cable to the bracket. Leave about 2" of slack in the cable above the top of the Support Hanger Bracket.

Note: Providing enough slack in the Vented Cable at surface allows you to lift the AquaVent Wellhead from the well cap base to access the Vented Cable connection, or record manual depth to water measurements, without disturbing the AquaVent 5 logger from its down hole position.

Note: The holes in the bracket can accommodate twist ties or zip ties to secure the cable to the bracket if desired.



Connect the other end of the Vented Cable to the AquaVent 5 logger. See section 1.5.1 for more details. Lower the Vented Cable with logger down the well.

Note: For diagnostic purposes, you may wish to install the end of the Vented Cable with the serial number, to the Wellhead connection at surface.



Lower the Support Hanger bracket into the well until it seats on the shoulder in the well cap base.

Note: There are three holes in the top of the Support Hanger Bracket that can be used to secure it in the well cap base with screws.



Connect the Vented Cable to the Wellhead. See Section 1.5.1 for more details. **Take a manual depth to water measurement for your records.**



Carefully push the excess Vented Cable down the well. Twist the Wellhead onto the well cap base until it seats.

Note: Providing enough slack in the Vented Cable at surface allows you to lift the AquaVent Wellhead from the well cap base to access the Vented Cable connection, or record manual depth to water measurements, without disturbing the AquaVent 5 logger from its down hole position.

Figure 8-5 Installation using the Support Hanger Bracket



Figure 8-6
Logger Measurement Line

8.3 Logger Orientation

It is recommended that the LevelVent 5 or AquaVent 5 logger be installed in a vertical orientation. However, inclined or horizontal installation is acceptable.

The pressure sensor measurement line is indicated by the machined line around the logger body, just above the pressure access holes (Figure 8-6).

The pressure transducer is oriented in a plane normal to the long axis of the body, and detects pressure directed along the plane of the long axis. In vertical orientations, the sensor detects pressure above the pressure transducer line. In non-vertical orientations, the pressure zero point is proportional to the angle of inclination.

8.4 Logger Installation Depth

Properly estimate the minimum and maximum water levels expected during the monitoring period. As it measures height of water above the sensor, the logger needs to be installed so it remains submerged at all times. However, the logger should not be installed deep enough to touch the bottom of a well or channel (avoid submergence in sediments).

Maximum submergence depth must also remain within its specified range throughout the monitoring period. The pressure transducer can be damaged, if the logger is over-pressurized by submerging it below its intended range. LevelVent and AquaVent loggers are warranted up to 200% of their full scale range, however, accuracy can not be guaranteed beyond full scale.

8.5 Installation Precautions

Carefully lower the logger into water. The impact of suddenly dropping the logger into water could permanently damage the transducer. Care should be taken to avoid dropping the logger against a hard surface.

Other important considerations when installing the logger in pressurized or intermittently pressurized locations such as pressure vessels, pressurized pipes, pulse flow conditions, drop structures or near hydraulics works, is to keep in mind the potential effect of water or steam hammer and hydraulic jump.

Water hammer is caused by an abrupt alteration of flow direction resulting in pressure surges. Steam hammer occurs when steam enters a cold pipe partially filled with water. The hammer effect has the potential to significantly increase hydraulic pressure possibly exposing the pressure sensor to pressures beyond its maximum rating.

Hydraulic jump is a phenomenon that occurs when water is 'lifted' or 'ramped' by velocity or flow obstructions. Hydraulic jump causes turbulence and creates non-representative head conditions in the water column. Care should be taken to avoid installation at points susceptible to hydraulic jump.

8.6 Installation in Extreme Environments

8.6.1 Freezing or High Temperature Conditions

Installation in locations that may be at risk of freezing is not recommended without taking precautions. When water freezes it expands approximately 9% by volume. A 9% expansion can equate to extreme pressure. Therefore, solid freezing has the potential to damage the pressure transducer, which is rated to withstand up to 200% of its depth fluctuation range. As such, care should be taken when choosing the appropriate pressure transducer range for your application.

Note: Although precautions can be taken, placing a LevelVent 5 or AquaVent 5 in a situation where the water may freeze solid can permanently damage the sensor.

If monitoring shallow water bodies or groundwater zones susceptible to freezing, the easiest way to avoid transducer damage is to lower the transducer to a point in the water column below the frost line or ice formation depth. In water bodies such as shallow streams, wetlands or ponds where freezing may penetrate to the bottom, install the LevelVent 5 or AquaVent 5 in a vented stilling well imbedded into the bottom of the water body beyond the frost line.

In cases where the above noted precautions cannot be taken and the LevelVent 5 or AquaVent 5 logger must be installed in the freezing zone, it is recommended that they be placed inside a thick membrane balloon filled with a non-toxic, non-corrosive anti-freeze solution and sealed. Place the balloon in a section of perforated, 30 mm (1.25") ID pipe and install the logger in the monitored water. The antifreeze solution will protect the logger from ice expansion at the pressure transducer, yet transmit any pressure and temperature fluctuations that occur. However, it should be noted that even if these precautions are taken, there is still the risk that placing a LevelVent or AquaVent in a situation where the water may freeze solid can permanently damage the sensor.

Please note that a similar installation protection can be used when the logger is monitoring liquids which are incompatible with its wetted materials.

The operating temperature range for the LevelVent and AquaVent loggers is -20° to 80°C (-4° to 180°F). At the opposite end of the thermal scale, exposing to temperatures beyond 80°C may damage the batteries/electronics and otherwise affect the instruments.

8.6.2 Marine or Brackish Installations

When installing a LevelVent or AquaVent in salt or brackish water or in a liquid having a specific gravity (density) different than fresh water, the density difference is compensated for by inputting the density of the monitored fluid in the Data Wizard (see Section 6).

The LevelVent 5 or AquaVent 5 can be used for monitoring in salt or brackish water. However, long term use of the stainless steel body LevelVent and AquaVent in salt or brackish water is not recommended, as the salt or other pollutants may cause pitting which can lead to perforation of the logger's casing. To minimize this effect, regularly lift the logger from the liquid; within seconds a thin protective layer will be formed by oxidation.

If using a LevelVent or AquaVent in a continuous salt/brackish monitoring scenario, the stainless steel body of the logger can be protected in a manner similar to the freezing protection method described in Section 8.6.1. The logger can be placed in a thick membrane balloon filled with non-corrosive/ non-toxic fluid, such as tap water. As pressure changes, the fluid encasing the logger will transmit the pressure differential to the pressure transducer.



Figure 8-7 Biofoul Screen Dimensions

8.6.3 Biofouling Conditions

Biofouling is the unwanted buildup of microorganisms, plants, algae, or organisms such as barnacles and muscles on a wetted surface. When a LevelVent or AquaVent is deployed for an extended period of time, especially in a saltwater environment, there is the risk of biofouling. Biofouling on the pressure sensor can compromise the accuracy of the measurements.

A Solinst Biofoul Screen can be used to protect the LevelVent or AquaVent from biofouling. The copper-coiled Delrin screen naturally reduces biofouling, and lengthens the time a datalogger can be deployed before maintenance is required. The Biofoul Screen simply slips onto the sensor end of the logger where it is held in place with its compression fitting. It adds about 19 mm (3/4") to the length of the logger. It allows water to freely enter the pressure transducer inlets. It is replaced as required.



Figure 8-8 Solinst Biofoul Screen

9 Vented Datalogger Maintenance

As with any groundwater or surface water monitoring project, you should select the proper equipment and determine a maintenance schedule based on the monitoring environment specific to your application.

For the LevelVent and AquaVent, this means selecting the appropriate pressure range, ensuring the monitoring temperatures are within the instruments specifications, and making sure the wetted materials are compatible with site chemistry.

9.1 Logger Maintenance

Logger maintenance consists of cleaning the outside casing and the circulation holes. The required frequency of cleaning is dependent on several aspects of the monitored water quality. In freshwater with good to excellent water quality, the cleaning requirements will be very minimal; amounting to a seasonal or even annual maintenance inspection.

In most cases cleaning can be accomplished by rinsing the logger and using mild, non-residual, non-abrasive household cleaners with a very soft-plastic, bristled, pipe-cleaner type brush. Do not insert any object through the circulation holes at the sensor end of the logger.

In some cases simple cleaners are insufficient to properly clean the logger. Several commonly occurring water conditions require specific maintenance methods. These include hard water, high suspended solids loading, biological or chemical fouling and salt or brackish water conditions.

Hard water monitoring can result in the precipitation of calcium and magnesium deposits on the pressure transducer as well as other components of the logger. These deposits can be safely dissolved using a diluted solution (typically $\leq 10\%$ strength) of acetic or phosphoric acid. Commercially available products for dissolving hard water scaling are also available and can be used if designed for household use. Some industrial strength hard water scaling removers are much higher strength and are not recommended for cleaning the logger.

High suspended solids load may block the circulation ports or clog the internal pressure cell of the logger. The potential clogging effect of solids deposition can be minimized by placing the logger in zones of flow. To remove solids build up, rinse the logger under a low flow of tap water until particles have been washed away.

Bacteriological or chemical fouling can be an important consideration in many ground and surface water monitoring projects. Sessile bacteria will often utilize installed instrumentation as an attachment substrate. Chemical deposit can be the result of electrical charge differential between the instrumentation of the monitored liquid or the result of biological or algal activity. Both forms of fouling can result in difficult to remove deposits on the logger transducer, the conductivity wires and the logger casing. To remove fouling use a diluted ($\leq 10\%$) solution of sulfuric acid. Persistent material may require soaking for several hours.

For loggers being used with older style Vented Cables (sold before 4/16/21 with serial numbers lower than 506326), replacing the o-ring should be done on a regular basis. The o-ring ensures a tight seal at the Vented Cable connection, which is important for keeping moisture out. Replacement o-rings are available in sets of ten from Solinst.



Figure 9-1 O-Ring at the Vented Cable Connection – older style loggers

Proper storage when not in use is important. The logger should be stored with the protective cap threaded onto the Vented Cable connector. The hard case that the logger was received in, should also be used to protect the logger during storage.



Figure 9-2 Logger with Storage Cap and Protective Case

9.2 Vented Cable Maintenance

Proper storage of the Vented Cable is very important. The Vented Cables are shipped with the ends capped; these caps should be retained, and used to seal the Vented Cable connections when not in use and during periods of storage. It is also recommended the Vented Cable be stored on the spool it was received on (for longer lengths). This protects the Cable and avoids the vent tube from being kinked.

Note: Before the Vented Cables are shipped, the vent tubes are blown dry with nitrogen gas, and capped, to ensure no moisture during transport. These caps should be retained.

To ensure the vent tube is dry before deployment or storage, Solinst offers a special fitting that allows you to blow nitrogen gas through the tube. See Section 9.2.1.

Cleaning the connections ensures a proper seal. A cotton swab can be used to clear any moisture or debris from the connectors.

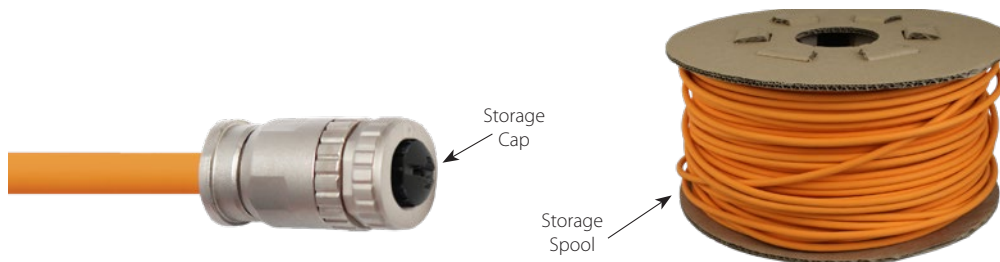


Figure 9-3 Vented Cable Maintenance

9.2.1 Vented Cable Blowout Fitting

Using the Vented Cable Blowout Fitting to dry the vent tube is recommended before starting any new project or before storing the Vented Cable.



Figure 9-4 Vented Cable Blowout Fitting

To use the Vented Cable Blowout Fitting:

Note: Always follow Personal Protection Protocol when working with a compressed gas.

1. Remove the storage caps from both ends of the Vented Cable (remember to save the caps). Or if deployed, remove the logger and Wellhead.
2. Connect one end of the Vented Cable to the correct connection on the Blowout Fitting. Ensure proper alignment before pushing the connection together. Twist the coupling onto the Blowout Fitting until it seats. Do not twist the Vented Cable, cable connector body, or Blowout Fitting.

Note: Do not twist the Blowout Fitting, Vented Cable or cable connector body when connecting to the fitting. Only twist the coupling.

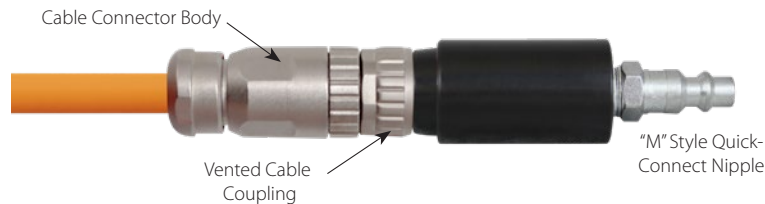


Figure 9-5 Vented Cable Connected to the Blowout Fitting



Figure 9-6 Nitrogen Gas Being Blown Through the Vented Cable

3. Connect the other end of the Blowout Fitting to the nitrogen gas tank hose fitting.
4. Slowly apply 25-30 psi of nitrogen gas to the Vented Cable. Let pressure flow through the cable for about 5 minutes. If you hear no air flow, you can apply up to 50 psi of pressure to clear any blockages.

Note: Do not exceed 50 psi of pressure when using the Vented Cable Blowout Fitting.

5. Turn off the nitrogen gas flow and remove the Vented Cable from the Blowout Fitting.
6. If deploying the datalogger immediately connect one end of the Vented Cable to the logger, and the other to the Wellhead. See Section 1.5.1 for connection instructions.
7. If storing the Vented Cable, immediately install the storage caps to both ends of the Vented Cable.

9.3 Wellhead Maintenance

Replacing the batteries in an AquaVent Wellhead will have to be done on a regular basis, and is based on usage. See Section 8.2.1 for battery life estimates and installation instructions.

Note: After retrieving the settings in Levelogger Software, If the Wellhead batteries have drained to 20% charge or lower, a warning message will appear to replace the batteries.

For Wellheads being used with older style Vented Cables (sold before 4/16/21 with serial numbers lower than 506326), **replacing the o-ring** at the Vented Cable connector should be done regularly. The o-ring ensures a tight seal at the Vented Cable connection which is important for keeping moisture out. Replacement o-rings are available in sets of ten from Solinst.

When not in use, the Wellhead should be stored with the dust cap on the Vented Cable Connector. The blue dust caps should also be secured to the cable connector(s) on the side of the AquaVent Wellhead, and the black dust cap on the top of the LevelVent Wellhead.



Figure 9-7 Wellhead O-ring (older style Wellheads) and Dust Cap at the Vented Cable Connections

10 Diagnostics Utility

The Levelogger Software Diagnostics Utility can be used for troubleshooting dataloggers and obtaining information that can assist the Solinst Technical Support representative to identify and fix any problems you may encounter. The Diagnostics Utility can be launched from the Utilities menu at the top of the software. The utility can be used to run a self-test, do a Memory Dump, create and email reports, and reset the AquaVent battery indicator.

10.1 Run Diagnostics

The Run Diagnostics function reads the following information from the datalogger:

- 1) Logger and AquaVent Wellhead Serial Numbers
- 2) Logger Model Number
- 3) Logger and AquaVent Wellhead Firmware Versions
- 4) Battery Voltage
- 5) Battery Charge Level
- 6) Battery Remaining
- 7) Current Level Reading
- 8) Current Temperature Reading
- 9) Max/Min Temperature Reading
- 10) Max Pressure Reading
- 11) Data Logs Recorded

This information can be used to identify firmware, battery and/or temperature/pressure sensor status. This function also performs a series of self-tests on the datalogger to check for problems with the battery, memory, oscillator, pressure/temperature sensor. To execute this function simply click the 'Run Diagnostics' button. If any of these tests fail then a report should be created and emailed to service@solinst.com.

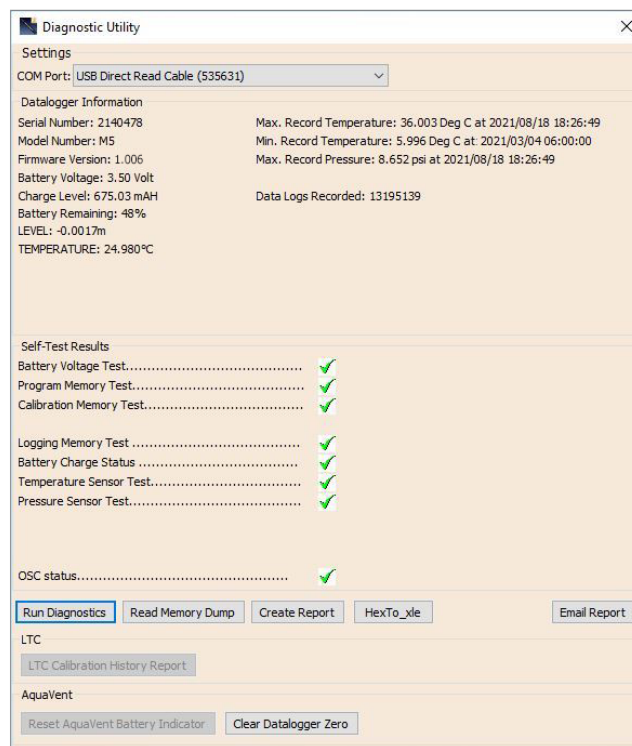


Figure 10-1 Run Diagnostics

10.2 Read Memory Dump

This function creates a complete dump of the datalogger’s memory, which can then be sent to service@solinst.com for analyzing, or converted to *.xle files that you can open in the Data Control tab.

Note: It is recommended that, before attempting to use this function, you use the ‘Create Report’ function to send a report to the Solinst Technical Support.

To execute this function simply click the Read Memory Dump button. Performing a memory dump will create an *.hex file of the data that is saved on your PC.

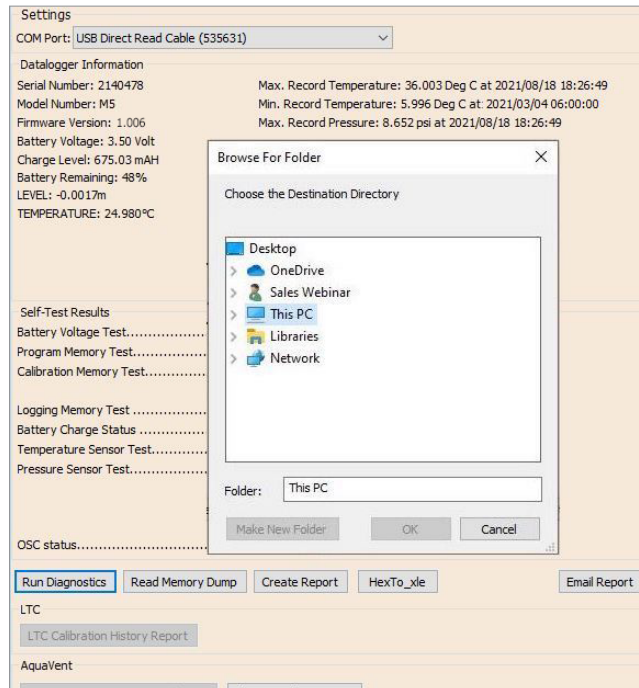


Figure 10-2 Read Memory Dump

10.2.1 File Conversion (hex to xle)

This function converts the *.hex file that was created and saved with the Read Memory Dump function, to *.xle files that you can open in the Data Control tab, or send to Solinst for technical support. A list of the files created will be displayed.

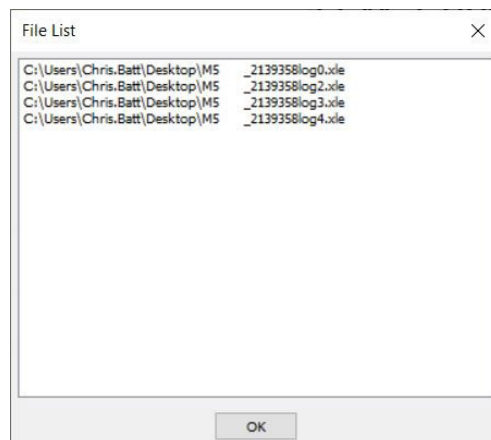


Figure 10-3 Hex To _xle File Conversion List

10.3 Create Report

This function simply creates a text file containing the information obtained from the Run Diagnostics function. When you click the Create Report button, a window will pop up asking you to fill out your company information. Simply fill this out and the resulting report can be saved or sent to service@solinst.com for troubleshooting.

Note: The 'Email Report' option automatically creates a report and attaches it to an email to send to Solinst - all in one step.

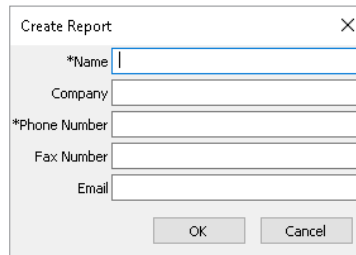
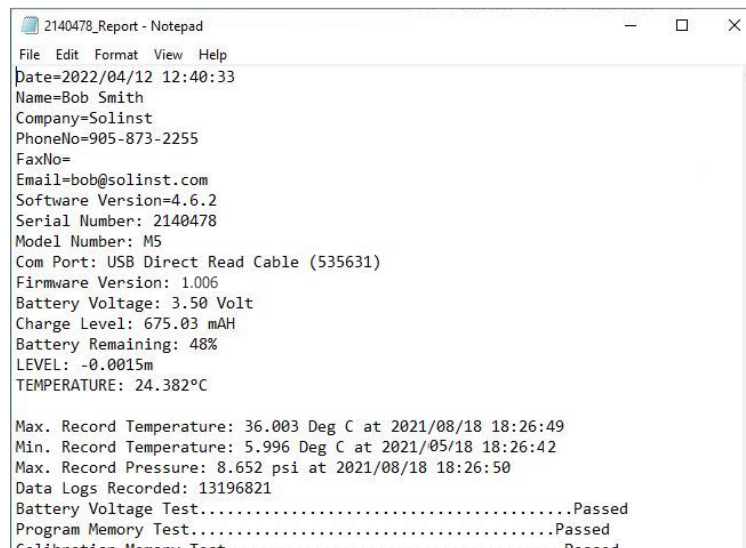


Figure 10-4 Customer Info Input Window



```

2140478_Report - Notepad
File Edit Format View Help
Date=2022/04/12 12:40:33
Name=Bob Smith
Company=Solinst
PhoneNo=905-873-2255
FaxNo=
Email=bob@solinst.com
Software Version=4.6.2
Serial Number: 2140478
Model Number: M5
Com Port: USB Direct Read Cable (535631)
Firmware Version: 1.006
Battery Voltage: 3.50 Volt
Charge Level: 675.03 mAH
Battery Remaining: 48%
LEVEL: -0.0015m
TEMPERATURE: 24.382°C

Max. Record Temperature: 36.003 Deg C at 2021/08/18 18:26:49
Min. Record Temperature: 5.996 Deg C at 2021/05/18 18:26:42
Max. Record Pressure: 8.652 psi at 2021/08/18 18:26:50
Data Logs Recorded: 13196821
Battery Voltage Test.....Passed
Program Memory Test.....Passed
Calibration Memory Test.....Passed
    
```

Figure 10-5 Report Example

10.4 Email Report

Clicking Email Report will guide you through the process of creating a Diagnostics Report, and it will automatically attach the report to an email to send to service@solinst.com for troubleshooting.

10.5 Software/Firmware Updates

Each time the Diagnostic Utility is opened, it automatically checks for software updates. If there is an update, "[Software Update Available](#)" will appear in the top right of the window. When you click the message, a web page will open, allowing you to download the software update.

Note: Your Computer must have an Internet connection to check for software and firmware updates.

Note: You can also check for updates using the Help menu.

The Utility also checks for firmware updates. "[Firmware Update Available](#)" will appear in the top right of the window. Clicking the message will open a web page where you can download the firmware update. See Section 11 for firmware update instructions.

10.6 Reset AquaVent Battery Indicator

After replacing the Wellhead batteries, in order to reset the battery indicator in the Levelogger Software, click the “Run Diagnostics” button, then click “Reset AquaVent Battery Indicator”.

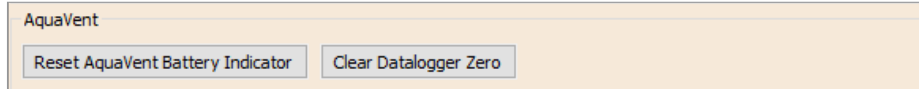


Figure 10-6 Reset AquaVent Battery Indicator

10.7 Clear Datalogger Zero

To clear a previously performed field zero (See Section 4.8), click “Clear Datalogger Zero”.

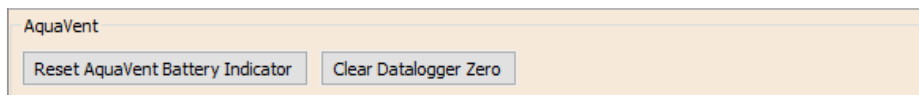


Figure 10-7 Clear Datalogger Zero

11 Firmware Upgrade Utility

With the logger connected to the Wellhead by the Vented Cable, use the USB PC Interface Cable to connect the LevelVent Wellhead to the PC, or use the USB Connector Cable to connect the AquaVent Wellhead to the PC.

Note: To check for firmware updates using Levellogger Software, retrieve settings from the connected datalogger (see Section 4). “Firmware Update Available” will appear in the top right menu bar if there is an update available. Clicking the message will open a web page where you can download the firmware update. You can also use the Software’s Help menu.

The SPX AquaVent Wellhead also needs a power supply connected to the SDI-12/MODBUS Connector Cable in order to perform the firmware upgrade. See separate User Guides for power connection instructions.



The Firmware Upgrade Utility is used to upload new firmware files to a LevelVent logger, AquaVent logger and/or SPX AquaVent Wellhead. The Firmware Upgrade Utility can be launched from the Utilities menu at the top of the Levellogger Software. The zipped firmware file can be obtained from: <https://downloads.solinst.com>

Note: While the firmware is being updated, the SPX Wellhead will ignore or provide time-out response to any requests from the MODBUS or SDI-12 network.

Make sure to unzip the firmware file after you have downloaded it, so you can access the *.ssf file. There are separate firmware files available; one for the LevelVent logger, one for the AquaVent logger and one for the SPX AquaVent Wellhead. Update each hardware component separately; update the AquaVent Wellhead before updating the AquaVent logger.

Note: It is important that the communication between the PC and the datalogger is not interrupted during a firmware upload, so please make sure to close any other running programs, including screen savers, and do not disconnect the datalogger before the upload is finished.

To upload new firmware to a logger or AquaVent Wellhead, follow these steps:

- 1) Open the Solinst Firmware Upgrade Utility from the Utilities menu in the Main Levellogger Software Window. Select the Com Port that the datalogger is connected to from the drop-down menu.
- 2) Click the ‘Open’ button  , which should open a file dialog asking for the firmware file (*.ssf) to upload. Navigate to the directory where the firmware file was saved on your PC, then click on the file and click ‘Open’.
- 3) Check the ‘File Information’ box to make sure the opened file is correct.
- 4) Click the ‘Upload Firmware’ button  , to start the firmware upload process.

Note: If an upgrade process in the SPX Wellhead fails or is interrupted, then recovery may require a power cycle, usually accomplished by unplugging the USB Connector Cable and SDI-12/MODBUS Connector Cable, then re-connecting after 30 seconds.

- 5) If a communication error occurs and is indicated in the ‘Datalogger Status’ box either before or after the “Verifying Firmware” and “Loading Firmware to Datalogger” messages, then restart the upgrade process.
- 6) If, however, a communication error occurs between the “Verifying Firmware” and the “Loading Firmware to Datalogger” messages, then please contact Solinst. You will need to give the datalogger Serial Number and explain the exact positioning of the error message.

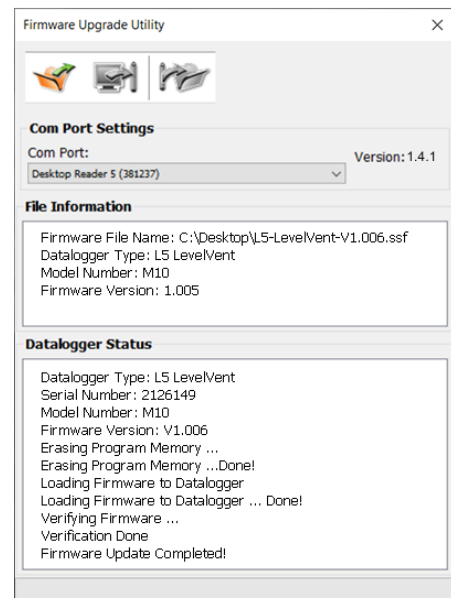


Figure 11-1 Firmware Upgrade Utility Window

12 Troubleshooting

12.1 Problems During Installation of Levellogger Software

‘Class not Registered’ or ‘DLL not found’ or ‘Access violation’

- 1) You may not have Administrator Rights to install the software in the Windows 10 or 11 environment. Ask your System Administrator for assistance.
- 2) Some files got corrupted during installation of the Levellogger Software. Use ‘Add/Remove Programs’ to uninstall, and then install a new current copy of the latest Levellogger Software from:
<https://downloads.solinst.com/>

12.2 Error During Software Uninstall Process

The ‘Add/Remove Program’ cannot locate the Levellogger <setup.exe> file of the software or the link between the software and the ‘Add/Remove Program’ is damaged.

The record in the Registry Table must be removed:

- 1) Ask your System Administrator to remove this.
- 2) Refer to the following link from Microsoft Website for instructions:
<http://support.microsoft.com/default.aspx?scid=kb;en-us;247501>

12.3 Data Has Been Erased Accidentally

If a previous version LevelVent or AquaVent datalogger has been restarted and old data has not been saved, go to Download Options and choose Data Recovery. It downloads the immediately previous log.

12.4 Error Messages During Use of Software

‘Communication Time Out’ or ‘Communication Error’ or ‘The Command that is sent to the Levellogger is not defined’

- 1) Try communicating with another logger, Wellhead, Vented Cable or USB PC Interface/Connector Cable.
- 2) Clean the Vented Cable connections to the logger and Wellhead.
- 3) Check that the USB PC Interface/Connector Cable is connected to the same Com Port that is chosen in the upper middle of the Main Window of the Levellogger Software.
- 4) Check the Com Port settings. They should be as follows:
 - Bits per second: 9600
 - Data bits: 8
 - Parity: None
 - Stop bits: 1
 - Flow control: None
(This may have been set to Xon/Xoff – change it to None, Select [OK] and back out of this pathway.)

The route to view your Com Port settings is as follows:

- a. Select Control Panels
 - b. Double click on System
 - c. Select the Device Manager Tab
 - d. Double click on Ports
 - e. Double click on Communications Port(s)
 - f. Choose the Port Settings Tab
- 5) Try using a different computer, to see if this is the cause of the problem.
 - 6) If problem persists, contact Solinst.

'Port Cannot Open'

- 1) Ensure you have plugged the USB PC Interface/Connector Cable into the PC before starting Levelogger Software.
- 2) Ensure the correct Com Port is selected in the upper middle of the Main Window of the Levelogger Software.
- 3) Check if some other software is using the same Com Port in the background. Shut that software down or choose another Com Port if available. Such background software may be anti-virus software or PDA software.
- 4) Make sure your Com Port has been enabled:
 - a. Select Control Panel
 - b. Double click on System
 - c. Select the Device Manager Tab
 - d. Double click on Ports
 - e. Double click on Communications Port(s)
 - f. Choose General
 - g. Uncheck 'Disable in this hardware profile box'

'File Create Error' and 'File Write Error'

- 1) If you do not have file-writing privileges to the default data folder, change the folder as follows: in the Levelogger Software, click 'Configuration' then 'Application Settings'. Under 'Default Directory', enter a new destination folder, to which you have file writing privileges, e.g. 'My Documents'. Follow the same procedure if you have the same problem when you export the data file in csv format.
- 2) Ask your System Administrator for assistance.

'File Open Error' and 'File Read Error'

- 1) Shut down or disable any other software that is active and using the same file.
- 2) In Notepad or Wordpad, open the <*.xle> file to check for corruptions. How are the data files ended?
- 3) If problems persist contact Solinst for assistance.

'A different type of Levelogger is detected'

Try clicking the Retrieve Settings icon again, or replace the datalogger currently connected, with the one that was previously being worked on, and complete the operation.

'Data Corrupted'

Contact Solinst for assistance. Use the Diagnostic Utility to do a memory dump and sent the dump file to Solinst for further analysis.

'Internal Error'

Contact Solinst for assistance.

'Fail to append data - A different Levellogger has been detected!' or 'Fail to append data - A different start time has been detected!' or 'Fail to append data - New data is not available in the Levellogger!'

The Levellogger Software can only append data to a file that has the same serial number and start time as the connected datalogger. Find the correct file, or use 'All Data' to download the complete file.

'Only Levellogger Gold/Edge/5 supports this function'

The 'Append Data', 'Partial Download' and 'Data Recovery' functions are only supported by the Levellogger Gold/Edge/5/LevelVent/AquaVent.

'Schedule cannot be empty'

When using the 'Schedule' sampling option for a datalogger, the schedule must contain at least one item.

'Readings in schedule exceed the maximum'

The number of readings in a schedule should not result in more than 150,000 individual readings.



www.solinst.com

High Quality Groundwater and Surface Water Monitoring Instrumentation

Solinst Canada Ltd., 35 Todd Road, Georgetown, Ontario Canada L7G 4R8
Tel: +1 (905) 873-2255; (800) 661-2023 Fax: +1 (905) 873-1992
instruments@solinst.com

Solinst[®]